

WELCOME TO TRENCHTECH, INC.

TrenchTech, Inc. supplies shoring solutions to the underground construction industry including excavators, utility contractors and general contractors. We provide the right products, excellent customer service, precision engineering, quality training and fast distribution for your shoring needs.

TrenchTech, Inc. will support your shoring efforts by offering site specific engineering and training to all excavators and contractors. Our fleet of trucks is standing by to deliver your OSHA compliant equipment to you quicker than anybody in the business. We sell trench shoring solutions nationally and internationally, and we are currently servicing the East Coast with locations in Morrisville, PA, Beltsville, MD, Washington, PA and Chesapeake, VA.

Since 1992, TrenchTech, Inc., a family-owned business of professionals, has offered its customers the best of both worlds. TrenchTech is small enough to give each customer the personal attention they expect, and large enough to provide customers with quality work based on years of experience and professional resources.

Our Headquarters in Morrisville, PA



Our Stock Yard in Morrisville, PA

Chesapeake, VA



Washington, PA

Our hands-on approach to each project has made the company an industry leader in the region. TrenchTech representatives visit each job location to review plans, formulate ideas and solutions to produce optimum results. Our locations in Morrisville, PA, Washington, PA, Beltsville, MD and Chesapeake, VA let us respond to our customer's needs immediately. With our fleet of delivery trucks and personnel who understand that time is money, we provide the fastest turnaround time, from order to delivery.

We also offer technical assistance in the field. TrenchTech specializes in site-specific designs and provides Competent Person Awareness Training and solutions for the most difficult problems.

For your convenience, TrenchTech has available for rent or purchase, the highest quality, most innovative systems on the market today. All equipment meets or exceeds OSHA requirements and is accompanied by manufacturer's tabulated data, stamped by a registered professional engineer.



Our Newest Warehouse Addition

INTRO TO TRENCHTECH PRODUCTS

TrenchTech, Inc. offers the highest-quality, OSHA-compliant aluminum and steel shoring equipment for sale or rental.

ALUMINUM PRODUCTS

Aluminum Trench Boxes (Build a Box, XLAP, Corruglite) & Hydraulic jacks (Vertical Shores, Horizontal Shores, High Clearance Shores, Hydra Shield).



STEEL PRODUCTS

Slide Rail Systems (ClearSpan, 3 or 4 sided pit, Linear Multiple Bay, Shore-Trak) & Steel Trench Boxes (XLS, XLD, HT6, HT8, HDHT8, Premium XL, Inner Shield Liner, Manhole Trench Boxes).



OTHER SHORING PRODUCTS

Fall Protection Systems, Steel Road Plates, Arches & Spreaders, Manhole Excavation Braces, Gas Clip Monitors, Snow Bucket & Stone Mizer.



TRENCH SAFETY UNIVERSITY

Classroom Training & Hands-on Demonstration

Having a safe job site ensures the safety of all workers and is the most important part of any project. Trench Safety University provides the training & certification resources necessary to become a more competent person. Our on staff experts provide all participants with the most comprehensive and thorough safety instruction to increase speed, competence & compliance.

Our course concentration is on trench safety, fall protection, air quality as well as other areas of focus regarding worker safety. Classes address awareness of OSHA standards that pertain to excavation safety, confined space (air quality) and fall protection. In addition to classroom training and what makes Trench Safety University stand out from others is that we will provide hands-on demonstration of equipment, the proper procedures for installing and removing shoring of all kinds, confined space entry and options for fall protection and air monitoring. All classes are conducted in compliance with OSHA standards and each attendee will be issued a certificate upon completion.

Our goal, at Trench Safety University is to make every job site and every worker above ground & below safe.



**COURSES ARE AVAILABLE AT ANY OF
OUR LOCATIONS OR AT YOUR FACILITY**

**GO TO
WWW.TRENCHSAFETYUNIVERSITY.COM
to see all available courses**

ALUMINUM TRENCH BOX

BUILD-A-BOX

MODULAR ALUMINUM TRENCH SHIELD SYSTEM



The Build-A-Box modular aluminum trench shield system can be quickly assembled to a wide variety of 2, 3, or 4-sided configurations.

USES:

- Repair Work
- Taps
- Laterals
- Limited Access Areas Using a Backhoe
- Manhole Installation

FEATURES:

- Pick-up truck transportable
- Can be hand-assembled in minutes
- Exclusive corner end posts - allows for unlimited box designs.
- Narrow sidewalls
- Tongue and groove design
- Foam filled
- Stackable with XLAP
- Ultra-light double wall aluminum
- Greatest strength to weight ratio in the industry
- Smooth Sidewalls to avoid dirt build-up & reduce friction
- Professional Engineer design & depth certification

OPTIONS:

- Sectional corner posts.
- Full length corner posts.
- 4 way corner posts.
- T-post connectors.
- Barrier posts.
- Adjustable legs.
- Splice kit.
- Wheel kit.

SPREADER OPTIONS:

- Adjustable spreaders.
- Arch spreaders.

BB 2-sided Build-A-Box Aluminum Modular Trench Shield with Sectional Corner Posts					
Ht x Lg. (ft.)	Weight (Lbs.)	Shield Capacity		Depth of Cut (Ft.) Soil Type	
		(PSF)	A	B	C-60
23 BBP	40	2,400	96	53	40
24 BBP	52	2,400	96	53	40
26 BBP	76	2,400	96	53	40
28 BBP	100	1,440	58	32	24
210 BBP	124	960	38	21	16
212 BBP	148	780	31	17	13
214 BBP	170	600	24	13	10
216 BBP	194	480	19	11	8

BB 3 & 4 sided Build-A-Box Aluminum Modular Trench Shield with Sectional Corner Posts					
Width x Lg. (ft.)	Shield Capacity (PSF)	Depth of Cut (Ft.) Soil Type			C-60
		A	B		
4 x 4	2,160	86	48		36
4 x 6	2,040	82	45		34
4 x 8	1,320	53	29		22
4 x 10	900	36	20		15
4 x 12	780	31	17		13
4 x 14	600	24	13		10
4 x 16	480	19	11		8
6 x 6	2,040	82	45		34
6 x 8	1,260	50	28		21
6 x 10	840	34	19		14
6 x 12	780	31	17		13
6 x 14	600	24	13		10
6 x 16	480	19	11		8
8 x 8	1,200	48	27		20
8 x 10	840	34	19		14
8 x 12	720	29	16		12
8 x 14	540	22	12		9
8 x 16	480	19	11		8
10 x 10	780	31	17		13
10 x 12	720	29	16		12
10 x 14	540	22	12		9
10 x 16	480	19	11		8
12 x 12	660	26	15		11
12 x 14	540	22	12		9
12 x 16	480	19	11		8
14 x 14	480	19	11		8
14 x 16	480	19	11		8
16 x 16	480	19	11		8



1. Transported by Pick-up truck.



2. Panels are set into corner end posts.



3. Panels are stacked to desired height.



4. Spreaders are pinned in place.



5. Versatility allows for T-connections.

ALUMINUM TRENCH BOX

CORRU-LITE

CORRUGATED ALUMINUM TRENCH SHIELD



The New Corru-Lite Shield is made of lightweight aluminum and is primarily used for light utility work. The Corru-Lite can be easily transported in the back of a pick-up truck.

FEATURES:

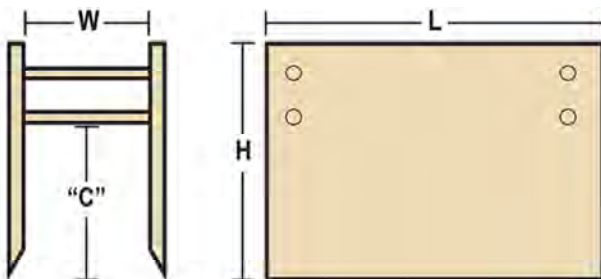
- Steel caps on top and bottom for added strength and durability
- Easily assembled by one or two people
- Easily transported in pick-up truck
- 4 point lifting system
- Molded tubular end members with recessed stacking or leg sockets
- Triple vertical tube collar design
- Pinned spreader connections
- Professional Engineer depth certification chart

OPTIONS:

- End kits for 3 & 4 sided protection.
- Leg kits for up to 2 ft. additional pipe clearance.
- Stacking Pins.

SPREADER OPTIONS:

- Static Steel
- Adjustable Steel
- Static Aluminum
- Adjustable Aluminum



Corru-Lite Corrugated Aluminum Trench Shield						
Model Ht.xLg.	Weight (Lbs.)	Pipe Clearance	Shield Capacity (psf)	Depth of Cut (ft) Soil Type		
				A	B	C-60
CL-24 2'x4'	106	12"	660	26	15	11
CL-26 2'x6'	137	12"	540	22	12	9
CL-27 2'x7'	156	12"	480	19	11	8
CL-28 2'x8'	176	12"	480	19	11	8
CL-210 2'x10'	215	12"	420	17	9	7
CL-212 2'x12'	262	12"	360	14	8	6
CL-44 4'x4'	156	12"	660	26	15	11
CL-45 4'x5'	184	12"	660	26	15	11
CL-46 4'x6'	212	12"	540	22	12	9
CL-48 4'x8'	260	12"	480	19	11	8
CL-410 4'x10'	344	12"	420	17	9	7
CL-412 4'x12'	377	12"	360	14	8	6
CL-56 5'x6'	275	18"	540	22	12	9
CL-66 6'x6'	354	22"	540	22	12	9

ALUMINUM TRENCH BOX

XLAP

3 IN. & 5 IN. ALUMINUM DOUBLE WALL TRENCH SHIELDS



TrenchTech's XLAP™ series aluminum panel trench shields are designed specifically for municipalities, utilities, and contractors who use rubber-tired backhoe/loaders and small excavators for trenching.

FEATURES:

- Telescoping spreader sets in a wide variety of sizes.
- Stackable with Build-A-Box™.
- Flat bottom or extruded aluminum knife edge on panels.
- Narrow sidewalls.
- Ultra-light double wall aluminum.
- Greatest strength to weight ratio in the industry.
- 3 in. sidewalls are smooth to prevent dirt build-up & reduce friction.
- Foam-filled wall construction prevents dirt & moisture accumulation.
- Pulling and Lifting Lugs.
- Professional Engineer design and depth certification.

OPTIONS:

- T-connections cut-outs.
- End panels for three and four-sided shields.
- Corner connector brackets.
- Adapters to allow use of standard XLS pipe spreaders.
- Adjustable spreaders.
- Custom spreader location.
- Steel or aluminum knife edge.
- Adjustable legs.
- Wheel kit.

SPREADER OPTIONS:

- XLAP-3
- XLAP-5



XLAP-5 w/ Steel End Frame, Knife Edge



Four-Sided with XLAP™ & Build-A-Box™



XLAP™ and Build-A-Box™



XLAP™ Aluminum Shield w/ cutout



End Panel, Cut-Out, & XLS Spreaders

XLAP Sidewalls 3 in. Aluminum Double Wall Adjustable Width Trench Shield

Model (Ht. x Lg.)	Weight (Lbs.)	Pipe Clearance "C" (In.)	Shield Capacity (PSF)	Depth of Cut (Ft.) B	Soil Type C-60	Soil Type C-80
46 XLAP	470	10	2,400	53	40	30
48 XLAP	590	10	1,740	39	29	22
410 XLAP	700	10	1,140	25	19	14
412 XLAP	820	10	840	19	14	10
414 XLAP	940	10	600	13	10	7
416 XLAP	1,050	10	480	11	8	6
66 XLAP	690	30	1,560	35	26	19
68 XLAP	850	30	1,200	27	20	15
610 XLAP	1,020	30	960	21	16	12
612 XLAP	1,190	30	720	16	12	9
614 XLAP	1,360	30	540	12	9	7
616 XLAP	1,520	30	480	11	8	6
86 XLAP	900	30	1,560	35	26	19
88 XLAP	1,120	30	1,200	27	20	15
810 XLAP	1,340	30	960	21	16	12
812 XLAP	1,560	30	780	17	13	10
814 XLAP	1,770	30	600	13	10	7
816 XLAP	1,990	30	480	11	8	6
108 XLAP	1,380	24	1,080	24	18	13
1010 XLAP	1,650	24	900	20	15	11
1012 XLAP	1,920	24	840	19	14	10
1014 XLAP	2,190	24	660	15	11	8

XLAP-5 Sidewalls 5 in. Aluminum Double Wall Adjustable Width Trench Shield

Model (Ht. x Lg.)	Weight (Lbs.)	Pipe Clearance "C" (In.)	Shield Capacity (PSF)	Depth of Cut (Ft.) B	Soil Type C-60	Soil Type C-80
68 XLAP-5	2,343	48	2,160	48	36	27
610 XLAP-5	2,561	48	1,740	39	29	22
612 XLAP-5	2,779	48	1,320	29	22	16
614 XLAP-5	2,997	48	1,020	23	17	13
616 XLAP-5	3,215	48	840	19	14	10
618 XLAP-5	3,512	48	720	16	12	9
620 XLAP-5	3,652	48	600	13	10	7
88 XLAP-5	2,895	58	1,560	35	26	19
810 XLAP-5	3,181	58	1,260	28	21	16
812 XLAP-5	3,466	58	1,080	24	18	13
814 XLAP-5	3,752	58	960	21	16	12
816 XLAP-5	4,038	58	840	19	14	10
818 XLAP-5	4,323	58	720	16	12	9
820 XLAP-5	5,774	58	660	15	11	8

ALUMINUM TRENCH BOX - PRODUCT SHOWCASE



BUILD-A-BOX



CORRU-LITE



X-LAP

**FOR MORE PRODUCT EXAMPLES &
INSTALLATION VIDEOS PLEASE VISIT
WWW.SHORINGSOLUTIONS.COM**

ALUMINUM HYDRAULIC SHORING

VERTICAL HYDRAULIC SHORES

SUPERIOR VERSATILITY IN TRENCHES UP TO 25 FT. DEEP AND 12 FT. WIDE

Uses:

Where Trench Shields are used to protect workers against cave-in's, Shores are used to actually apply pressure to trench walls to prevent cave-in's. TrenchTech Shores are an excellent lightweight resource for working around existing utilities, supporting trench walls near structures, curbs, or sidewalks, and for pipe installations where a larger backhoe can not be used. Most shores can be safely and easily installed and removed from the surface, thus avoiding the risk of working in an unshored trench. Shores offer superior versatility in trenches up to 25' deep and 12' wide. A cylinder extension system adds to the shores range which improves on-site adaptability when encountering excavations of varying widths. These high strength aluminum shores are available in standard or heavy-duty models and can be used to meet OSHA regulations in A, B, or C soils. FinForm sheets are used with shores to prevent sloughing of trench walls.

Standard Features:

- Two 8 in. wide rails ranging in size from 1.5 ft. to 16 ft. tall.
- 2 in. diameter hydraulic cylinders.
- Oversleeve to protect cylinder.
- Fittings & hose.
- Cylinder pads and socket pads.
- Swivel fitting protector.

Options & Accessories:

- Standard or Heavy-Duty Rails.
- Cylinder Extension System.
- 5 gal. Pump can (plastic or steel).
- Biodegradable Shoring fluid.
- Release tool (30, 48, 72, 96 inches).
- Removal hook (30, 48, 72, 96 inches).
- Finform (4 ft. x 8 ft. sheets)
- Cylinder barrel wrench (2").
- Finger guards.
- Repair kits.

VISIT WWW.SHORINGSOLUTIONS.COM



Shores, Walkers, and FinForm



Shore, tools, fluid, and pump can



Release & Removal Tools



Steel & Plastic Pump Cans



Hose Fitting & 90° Swivel Protector



Folded Shore and Finger Guard

ALUMINUM HYDRAULIC SHORING

VERTICAL HYDRAULIC SHORES

SUPERIOR VERSATILITY IN TRENCHES UP TO 25 FT. DEEP AND 12 FT. WIDE

Installation and Removal

Installation



Installation 1

Connect hydraulic hose line from pump to shore. Hook release tool through handle and lower shore into trench.



Installation 2

Pump shore to minimum pressure of 750 psi. Normal operating pressure is 750 psi to 1500 psi.



Installation 3

When shore is in place and pressurized to a safe working range disconnect the hose fitting with the release tool.



Removal



Removal 1

Release shoring fluid at hose fitting with the release tool and allow shore to depressurize. The released fluid is biodegradable.



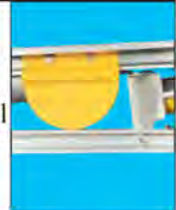
Removal 2

Pull the shore from the trench with the removal hook and release tool. The shore will scissor back toward a folded position.



Removal 3

Continue pulling the shore away from the trench until it folds flat. Finger guards will help to keep pinching points open.



*Competent Person or Qualified Person must refer to manufacturer's tab data for proper spacing and use for site conditions. Improper use can cause injury or death.

ALUMINUM HYDRAULIC SHORING

VERTICAL HYDRAULIC SHORES

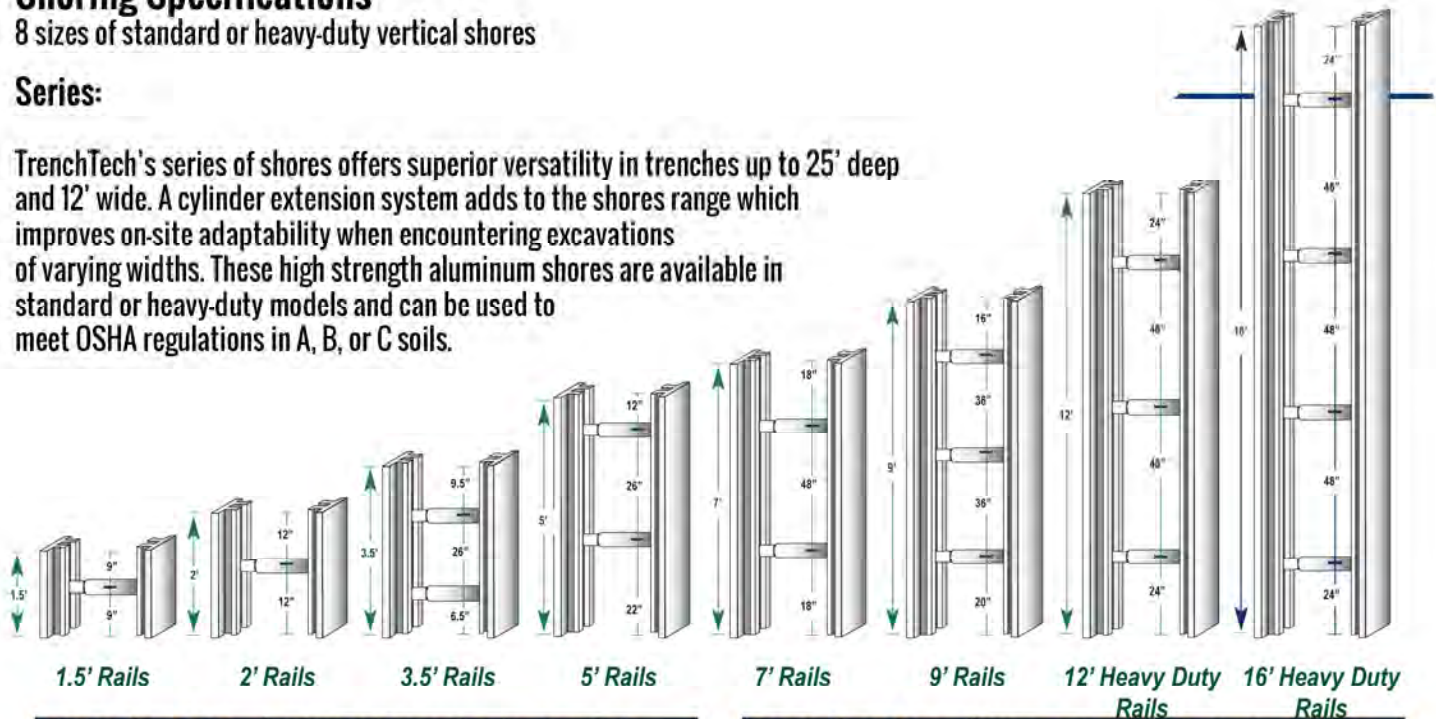
SUPERIOR VERSATILITY IN TRENCHES UP TO 25 FT. DEEP AND 12 FT. WIDE

Shoring Specifications

8 sizes of standard or heavy-duty vertical shores

Series:

TrenchTech's series of shores offers superior versatility in trenches up to 25' deep and 12' wide. A cylinder extension system adds to the shores range which improves on-site adaptability when encountering excavations of varying widths. These high strength aluminum shores are available in standard or heavy-duty models and can be used to meet OSHA regulations in A, B, or C soils.



Vertical Shore Rails Standard and Heavy-Duty Aluminum Rails						
Standard Rail (Sets of 2)	Weight (lbs.)	Heavy-duty Rail (Sets of 2)	Weight (lbs.)	Rail length (ft.)	Cross Brace width (in.)	No. of cylinders
1.5x1727-S	20	1.5x1727-H	25	1.5	17-27	1
1.5x2236-S	23	1.5x2236-H	28	1.5	22-36	1
1.5x2846-S	25	1.5x2846-H	30	1.5	28-46	1
1.5x3455-S	28	1.5x3455-H	33	1.5	34-55	1
1.5x4269-S	32	1.5x4269-H	37	1.5	42-69	1
1.5x5288-S	36	1.5x5288-H	41	1.5	52-88	1
2x1727-S	22	2x1727-H	27	2	17-27	1
2x2236-S	24	2x2236-H	29	2	22-36	1
2x2846-S	28	2x2846-H	33	2	28-46	1
2x3455-S	30	2x3455-H	35	2	34-55	1
2x4269-S	34	2x4269-H	39	2	42-69	1
2x5288-S	38	2x5288-H	43	2	52-88	1
3.5x1727-S	41	3.5x1727-H	50	3.5	17-27	2
3.5x2236-S	50	3.5x2236-H	54	3.5	22-36	2
3.5x2846-S	55	3.5x2846-H	61	3.5	28-46	2
3.5x3455-S	60	3.5x3455-H	66	3.5	34-55	2
3.5x4269-S	68	3.5x4269-H	74	3.5	42-69	2
3.5x5288-S	70	3.5x5288-H	82	3.5	52-88	2
5x1727-S	55	5x1727-H	61	5	17-27	2
5x2236-S	60	5x2236-H	65	5	22-36	2
5x2846-S	65	5x2846-H	72	5	28-46	2
5x3455-S	70	5x3455-H	77	5	34-55	2
5x4269-S	78	5x4269-H	85	5	42-69	2
5x5288-S	87	5x5288-H	93	5	52-88	2

Vertical Shore Rails Standard and Heavy-Duty Aluminum Rails						
Standard Rail (Sets of 2)	Weight (lbs.)	Heavy-duty Rail (Sets of 2)	Weight (lbs.)	Rail length (ft.)	Cross Brace width (in.)	No. of cylinders
7x1727-S	65	7x1727-H	78	7	17-27	2
7x2236-S	70	7x2236-H	82	7	22-36	2
7x2846-S	75	7x2846-H	89	7	28-46	2
7x3455-S	80	7x3455-H	94	7	34-55	2
7x4269-S	88	7x4269-H	102	7	42-69	2
7x5288-S	97	7x5288-H	110	7	52-88	2
9x1727-S	84	9x1727-H	104	9	17-27	3
9x2236-S	90	9x2236-H	110	9	22-36	3
9x2846-S	102	9x2846-H	120	9	28-46	3
9x3455-S	108	9x3455-H	128	9	34-55	3
9x4269-S	120	9x4269-H	140	9	42-69	3
9x5288-S	132	9x5288-H	152	9	52-88	3
-	-	12x1727-H	128	12	17-27	3
-	-	12x2236-H	134	12	22-36	3
-	-	12x2846-H	145	12	28-46	3
-	-	12x3455-H	152	12	34-55	3
-	-	12x4269-H	164	12	42-69	3
-	-	12x5288-H	176	12	52-88	3
-	-	16x1727-H	170	16	17-27	4
-	-	16x2236-H	177	16	22-36	4
-	-	16x2846-H	191	16	28-46	4
-	-	16x3455-H	202	16	34-55	4
-	-	16x4269-H	218	16	42-69	4
-	-	16x5288-H	234	16	52-88	4

Manufacturers tabulated data is available for FinForm sheets at time of order.
Finform is used to prevent sloughing of trench walls and is not considered to be a structural member.

All shores must be used in accordance with OSHA 29 CFR Part 1926 Subpart P (Federal, State, or local) under the direction of a competent person or qualified person.
Competent Person or Qualified Person must refer to manufacturers tab data for proper spacing and use for site conditions. Improper use can cause injury or death.

ALUMINUM HYDRAULIC SHORING

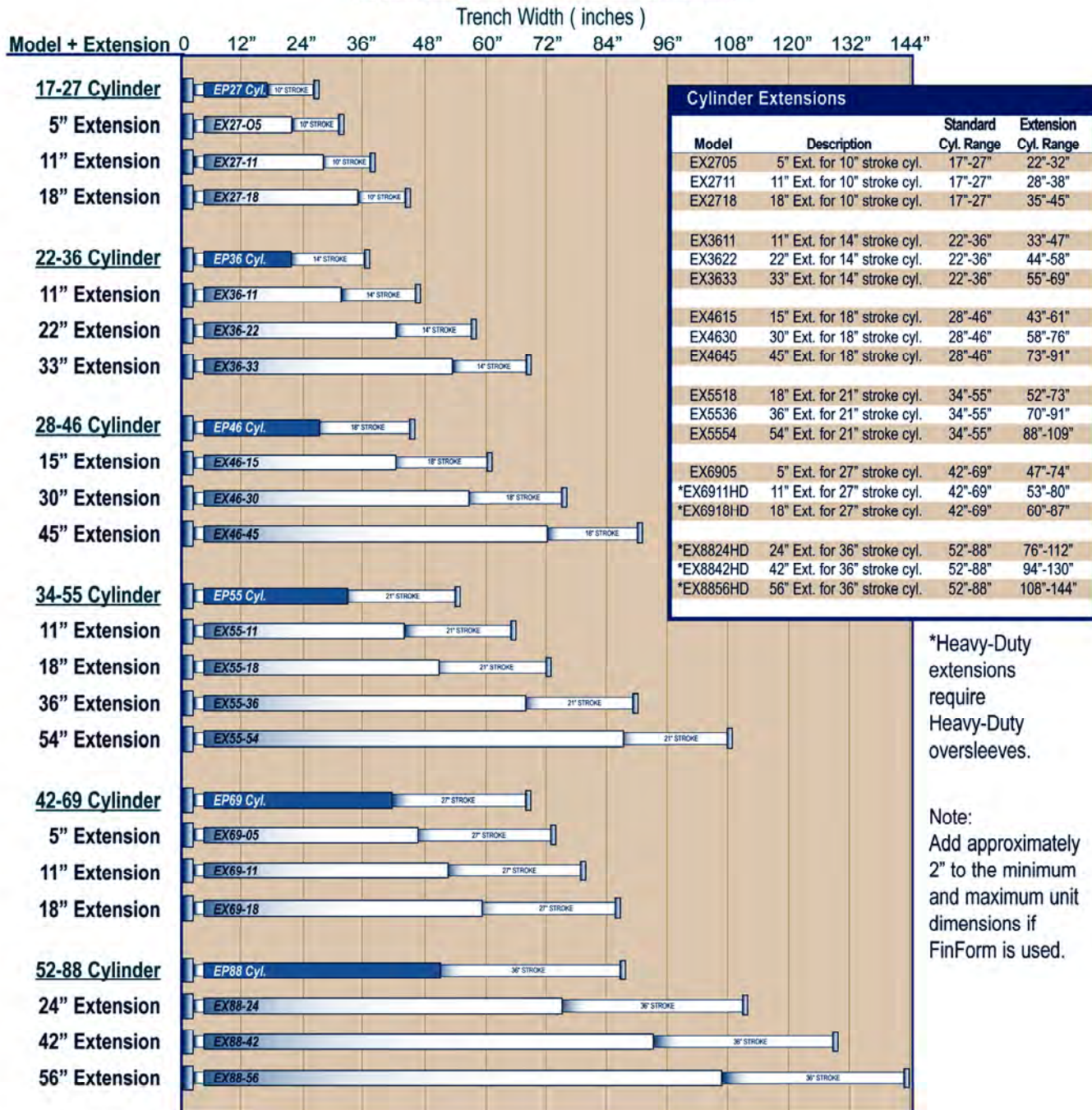
VERTICAL HYDRAULIC SHORES

SUPERIOR VERSATILITY IN TRENCHES UP TO 25 FT. DEEP AND 12 FT. WIDE

Cylinder & Extension Range

Cylinder extensions broaden the working range of shores

Cylinder & Extension Usage Chart



ALUMINUM HYDRAULIC SHORING

HORIZONTAL WALERS

HYDRAULIC HORIZONTAL SHORING WITH FINFORM

Uses:

TrenchTech's Walers can be used in deeper excavations than vertical shores. Walers also provide a greater working area than vertical shores since the spacing between cylinders ranges from 60 inches to 87 inches. Rail lengths range from 6 ft. to 16 ft and cylinder widths range from 3 ft. to 12 ft. Walers are used with 4' x 8' FinForm sheets and are ideal for "close sheeting" job conditions. Walers are installed from above the trench and require a backhoe for placement. Standard lifting eyes allow for balanced picking and easy installation. Walers are available in standard and heavy-duty models.

Standard Features:

- Two 8 in. wide rails ranging from 3' to 16' long.
- Hydraulic cylinders.
- Oversleeve to protect cylinder.
- Fittings & Hose.
- Eye bolts.
- Cylinder pads and socket pads.
- Handles.
- Swivel fitting protector.

Options & Accessories:

- Standard or Heavy-Duty Rails.
- Cylinder Extension System.
- 5 gal. Pump can (plastic or steel).
- Shoring fluid (Summer Grade & Winter Grade).
- Release tool (48").
- Removal hook (30, 48, 72, 96 inches).
- Finform (4 ft. x 8 ft. sheets)
- Cylinder barrel wrench (2").
- Heavy-Duty extensions with steel oversleeves.
- Finger guards.
- Repair kit.
- Nylon lifting slings.
- 3 and 4 cylinder manifolds.



Horizontal Walers Standard & Heavy-Duty				
Lg. x Cyl. WS = Standard WH = Hv-Duty	Weight Set of 2 (Lbs.)	Spacing between Cyl.'s (in)	Width between Walers (in.)	No. of Cyl.'s
6x36-WS	97	60	16-30	2
6x46-WS	105	60	22-40	2
6x55-WS	109	60	28-49	2
6x69-WS	117	60	36-63	2
6x88-WS	125	60	46-82	2
6x36-WH	167	60	12-26	2
6x46-WH	175	60	18-36	2
6x55-WH	179	60	24-45	2
6x69-WH	187	60	32-59	2
6x88-WH	195	60	42-78	2
8x36-WS	121	72	16-30	2
8x46-WS	129	72	22-40	2
8x55-WS	133	72	28-49	2
8x69-WS	141	72	36-63	2
8x88-WS	149	72	46-82	2
8x36-WH	215	84	12-26	2
8x46-WH	223	84	18-36	2
8x55-WH	227	84	24-45	2
8x69-WH	235	84	32-59	2
8x88-WH	243	84	42-78	2
12x36-WS	180	60	16-30	2
12x46-WS	188	60	22-40	2
12x55-WS	198	60	28-49	2
12x69-WS	210	60	36-63	2
12x88-WS	218	60	46-82	2

Horizontal Walers Heavy-Duty				
Lg. x Cyl. WH = Hv-Duty	Weight Set of 2 (Lbs.)	Spacing between Cyl.'s (in)	Width between Walers (in.)	No. of Cyl.'s
12x36-WH	309	96	12-26	2
12x46-WH	317	96	18-36	2
12x55-WH	321	96	24-45	2
12x69-WH	329	96	32-59	2
12x88-WH	337	96	42-78	2
12x36-WHX	309	126	12-26	2
12x46-WHX	317	126	18-36	2
12x55-WHX	321	126	24-45	2
12x69-WHX	329	126	32-59	2
12x88-WHX	337	126	42-78	2
12x36-WH3	321	63	12-26	3
12x46-WH3	333	63	18-36	3
12x55-WH3	339	63	24-45	3
12x69-WH3	351	63	32-59	3
12x88-WH3	363	63	42-78	3
16x36-WH3	416	87	12-26	3
16x46-WH3	428	87	18-36	3
16x55-WH3	434	87	24-45	3
16x69-WH3	446	87	32-59	3
16x88-WH3	458	87	42-78	3
16x36-WH4	428	75/87	12-26	4
16x46-WH4	444	75/87	18-36	4
16x55-WH4	452	75/87	24-45	4
16x69-WH4	468	75/87	32-59	4
16x88-WH4	484	75/87	42-78	4

(Manufacturers tabulated data is available for FinForm sheets at time of order.)

Competent Person or Qualified Person must refer to manufacturers' tab data for proper spacing and use for site conditions. Improper use can cause injury or death.

ALUMINUM HYDRAULIC SHORING

HI-CLEARANCE SHORES

SUPERIOR VERSATILITY IN TRENCHES UP TO 25 FT. DEEP AND 12 FT. WIDE

Uses:

TrenchTech Hi-Clearance Shores are an excellent lightweight resource for working around existing utilities, supporting trench walls near structures, curbs, or sidewalks and for pipe installations where increased vertical clearance is required. Hi-Clearance Shores offer superior versatility in trenches up to 25' deep and 12' wide with vertical clearances up to 84 inches. These shores can be used at the bottom of an excavation with standard or heavy-duty shores stacked on top. A cylinder extension system adds to the shores range which improves on-site adaptability when encountering excavations of varying widths. These high strength aluminum shores are available in heavy-duty models and can be used to meet OSHA regulations in A, B, or C soils. FinForm sheets are used with shores to prevent sloughing of trench walls.

Standard Features:

- Two 8 in. wide rails ranging in size from 8 ft. to 16 ft. tall.
- 2 in. diameter hydraulic cylinders.
- Oversleeve to protect cylinder.
- Fittings & hose.
- Cylinder pads and socket pads.
- Springs to assist with the retraction of the shores.

Options & Accessories:

- Standard or Heavy-Duty Rails.
- Cylinder Extension System.
- 5 gal. Pump can (plastic or steel).
- Biodegradable Shoring fluid.
- Finform (4 ft. x 8 ft. sheets)
- Nylon Lifting Sling.
- Cylinder barrel wrench (2").
- Finger guards.
- Repair kits.



VISIT WWW.SHORINGSOLUTIONS.COM

ALUMINUM HYDRAULIC SHORING

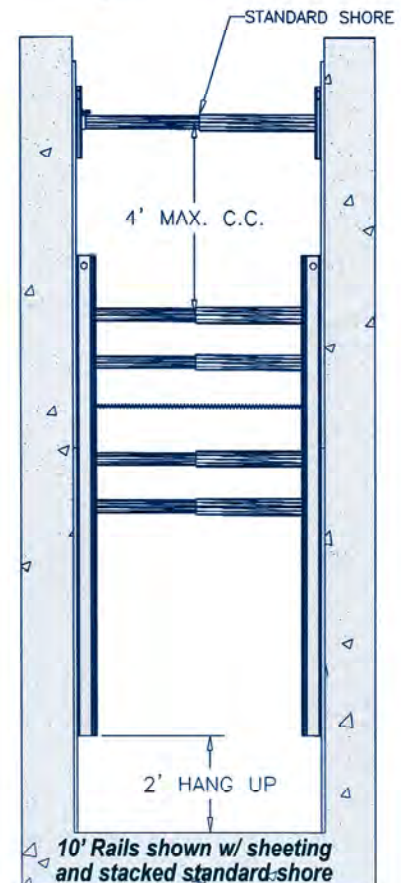
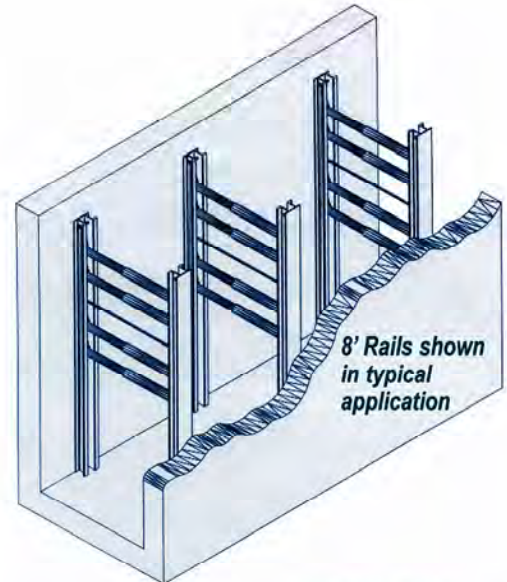
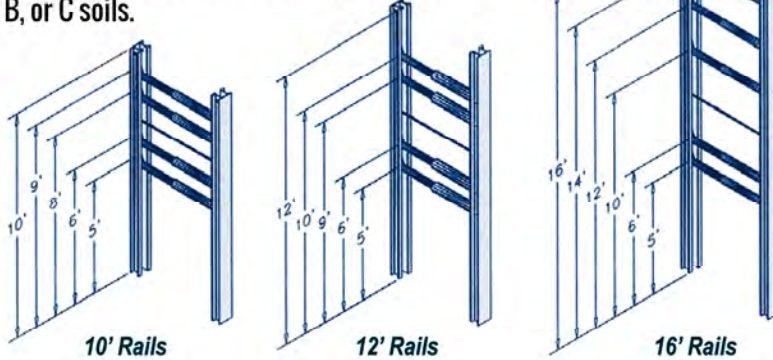
HI-CLEARANCE SHORES

SUPERIOR VERSATILITY IN TRENCHES UP TO 25 FT. DEEP AND 12 FT. WIDE

Hi-Clearance Shoring Specifications 4 sizes of Hi-Clearance vertical shores

Series: TrenchTech's series of Hi-Clearance Shores offers superior versatility in trenches up to 25' deep and 12' wide with up to 84 inches of clearance. A cylinder extension system adds to the shores range which improves on-site adaptability when encountering excavations of varying widths.

These high strength aluminum shores are available in heavy-duty models of 8, 10, 12, and 16 foot high rails and can be used to meet OSHA regulations in A, B, or C soils.



Hi-Clearance Vertical Shore Rails		Heavy-Duty Aluminum Rails		
Standard Rail (Sets of 2)	Rail length (ft.)	Weight (lbs.)	No. of cylinders	Cross Brace width (in.)
HI-CLEAR 8x36	8	244	3	22-36
HI-CLEAR 8x46	8	256	3	28-46
HI-CLEAR 8x55	8	262	3	34-55
HI-CLEAR 8x69	8	274	3	42-69
HI-CLEAR 8x88	8	286	3	52-88
HI-CLEAR 10x36	10	300	4	22-36
HI-CLEAR 10x46	10	316	4	28-46
HI-CLEAR 10x55	10	324	4	34-55
HI-CLEAR 10x69	10	340	4	42-69
HI-CLEAR 10x88	10	356	4	52-88
HI-CLEAR 12x36	12	343	4	22-36
HI-CLEAR 12x46	12	359	4	28-46
HI-CLEAR 12x55	12	367	4	34-55
HI-CLEAR 12x69	12	383	4	42-69
HI-CLEAR 12x88	12	399	4	52-88
HI-CLEAR 16x36	16	450	5	22-36
HI-CLEAR 16x46	16	470	5	28-46
HI-CLEAR 16x55	16	480	5	34-55
HI-CLEAR 16x69	16	500	5	42-69
HI-CLEAR 16x88	16	520	5	52-88

Manufacturers tabulated data is available for FinForm sheets at time of order.
Finform is used to prevent sloughing of trench walls and is not considered to be a structural member.
All shores must be used in accordance with OSHA 29 CFR Part 1926 Subpart P (Federal, State, or local) under the direction of a competent person or qualified person.
Competent Person or Qualified Person must refer to manufacturers tab data for proper spacing and use for site conditions. Improper use can cause injury or death.

ALUMINUM HYDRAULIC SHORING

HYDRASHIELD

HYDRAULIC ALUMINUM TRENCH SHIELD

Advantages:

TrenchTech's HydraShield is an extremely versatile aluminum trench shield that supports trench walls and structures and adapts to on-the-spot requirements by using hydraulic cylinders for spreaders to accommodate varying trench widths.

- It is easily handled with a rubber-tired backhoe and is ideal for municipal maintenance and repair work, fiber optic and cable installations, side sewer installations, water and gas connections, and any utility installations.

- A multi-valve manifold provides control of all cylinders with only one hose connection from a pump can.

- A retraction spring returns the cylinder to its contracted position for easy removal from the trench.

- Smooth walls prevent dirt build-up and reduce friction when positioning in the trench and extra-strength pulling and lifting lugs make handling the HydraShield fast, easy, and safe.

- The walls are constructed of foamfilled 6061-T6 extrusions.

- Optional Enclosed Spreaders cover the cylinders & springs and protect them from damaging accidental impact and dirt build-up.

- Optional telescoping steel spreaders may be substituted in order to use the HydraShield in a static mode.

- Stack Pocket sets allow the HydraShield to be stacked on top of another HydraShield, an XLAP, or a TrenchTech Build-A-Box modular aluminum trench shield when used in the static mode.

- Optional End Panels convert the HydraShield into a 3 and 4 sided shield.

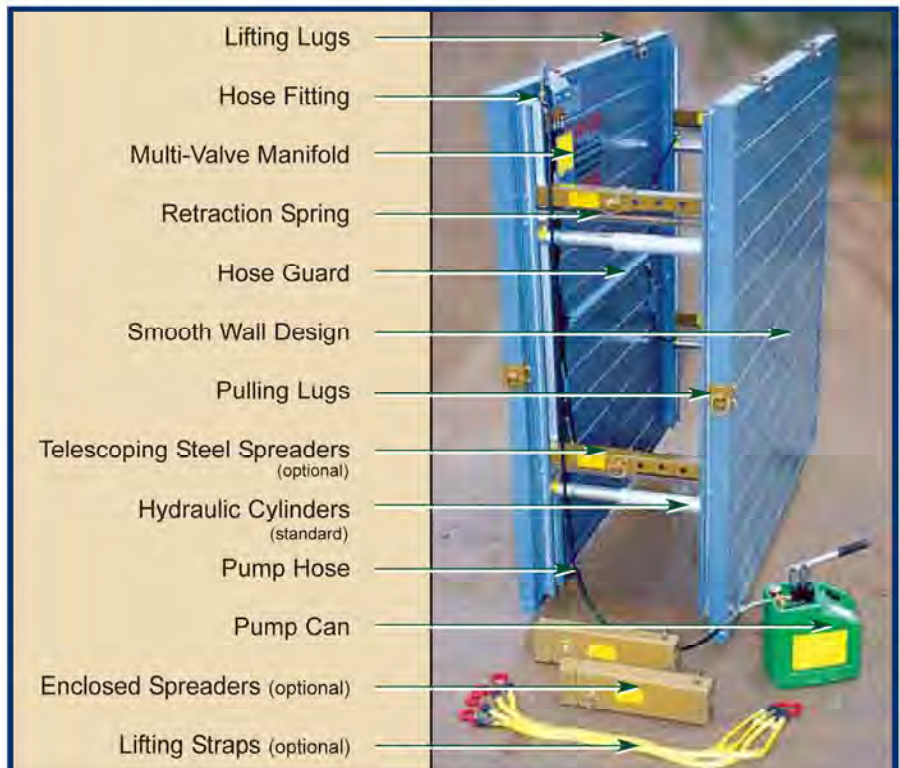
*Hydraulic mode offers greater shield capacity than the static mode.



Carried by rubber-tired backhoe



Pumps to various widths



VISIT WWW.SHORINGSOLUTIONS.COM

ALUMINUM HYDRAULIC SHORING

HYDRASHIELD

HYDRAULIC ALUMINUM TRENCH SHIELD



Pump can hose connection to manifold



Multi-valve manifold



Spring contracts cylinder for removal

HydraShield Sidewalls Hydraulic Aluminum Trench Shield												
Model (Ht x Lg) (ft.)		Weight (lbs.)	Shield Capacity <i>Hydraulic Mode</i> (psf)	Depth of Cut (ft.) Soil Type			Pipe Clearance (in.)	Shield Capacity <i>Static Mode</i> (psf)	Depth of Cut (ft.) Soil Type			Pipe Clearance (in.)
46 HS	520		1,500	25	25	25	16.25	1,500	30	30	25	22
48 HS	640		1,500	25	25	25	16.25	1,500	30	30	25	22
410 HS	750		1,140	25	23	19	16.25	1,140	30	23	19	22
412 HS	870		840	25	17	14	16.25	840	30	17	14	22
416 HS	1100		480	19	10	8	16.25	480	19	10	8	22
66 HS	740		1,500	25	25	25	24	1,500	30	30	25	31.25
68 HS	900		1,500	25	25	25	24	1,260	30	25	21	31.25
610 HS	1070		1,200	25	25	20	24	1,020	30	20	17	31.25
612 HS	1240		780	25	17	13	24	840	30	17	14	31.25
616 HS	1570		480	19	10	8	24	480	19	10	8	31.25
86 HS	950		1,500	25	25	25	24	1,500	30	30	25	31.25
88 HS	1160		1,500	25	25	25	24	1,260	30	25	21	31.25
810 HS	1390		1,200	25	25	20	24	1,020	30	20	17	31.25
812 HS	1610		900	25	18	15	24	840	30	17	14	31.25
816 HS	2040		600	24	12	10	24	480	19	10	8	31.25



Enclosed spreaders protect cylinders

Spreader Sets		
Model (Sets of 4)	Weight (lbs.)	Inside Width (in.)
HS-4-1727	145	17-27
HS-4-2236	180	22-36
HS-4-2846	230	28-46
HS-4-3455	275	34-55
HS-4-4269	337	42-69
HS-4-5288	410	52-88

Includes: 4 Cylinders, 4 Static Braces, Springs, Pins

Enclosed Spreader Sets		
Model (Sets of 4)	Weight (lbs.)	Inside Width (in.)
EHS-4-1727	215	17-27
EHS-4-2236	265	22-36
EHS-4-2846	339	28-46
EHS-4-3455	395	34-55
EHS-4-4269	467	42-69
EHS-4-5288	555	52-88

Includes: 4 Cylinders, 4 Static Braces, Springs, Pins

Excavations open for periods exceeding 24 hours require careful monitoring of changing soil conditions and/or dewatering systems. For instance, if the backfill changes from free draining to a water table at the top of the shield, the lateral pressures may double in magnitude. A change from "wet" to "fully saturated" may increase lateral pressures 30%. Excavations open for a period exceeding 5 days may experience "loss of cohesion" due to changes in moisture content, oxidation, tension cracks, etc. The Competent Person shall be responsible for monitoring, evaluating, reporting, and/or taking action for any adverse soil conditions that may exist as a result of changes to a construction site over time.

Competent Person or Qualified Person must refer to manufacturers fab data for proper spacing and use for site conditions. Improper use can cause injury or death.



foam-filled 6061-T6 extrusions

VISIT WWW.SHORINGSOLUTIONS.COM

ALUMINUM HYDRAULIC SHORING - SHOWCASE



Top & Left: Aluminum Hydraulic Shoring with Finform

Aluminum Hydraulic Shoring

Bottom: Aluminum Hydraulic Shoring - Stacked and Ready to GO!



SLIDE RAIL SYSTEMS

UNIVERSAL COMPONENT STEEL TRENCH SHIELDING SYSTEM

What is Slide Rail?

TrenchTech's Slide Rail is a component system comprised of steel panels and posts. It is commonly used as a cost-effective alternative to traditional driven close-sheeting. The universal system can be used in a variety of configurations to meet any shoring challenge, particularly in poor soil conditions or near adjacent structures.

Where is Slide Rail Used?

TrenchTech's Slide Rail can be custom-engineered to shore:

- Large & small vault installations
- Pump stations, lift stations & wet-wells
- Large tanks
- Footings and foundations
- Press pits inside buildings
- Long pipe joints
- Parallel water-mains
- Boring operations

How Is Slide Rail Used?

Slide Rail is installed simultaneously as the trench or pit is excavated by sliding the panels into rails on the posts and then pushing the panels and posts incrementally down to grade as the pit is dug; a process commonly referred to as a "dig and push" system. Slide Rail posts have either a double or triple rail which telescope panels to required depth.

Slide Rail Features:

- Reinforced top rails.
- Strongest post and panel connection in the industry.
- Thru-wall lifting lugs.
- Four-point lift system.
- Bolt-on collars for using SRS panels as standard trench shields (optional).
- Strongest knife edge in the industry.
- Plug welding.
- High strength mill certified steel.
- Professional Engineer design & depth certification.

Slide Rail Post Options:

- Single Corner Post (11 ft.)
- Double Corner Post (14, 18, 20, 24, 26 ft.)
- Triple Corner Post (28, 32 ft.)
- Double Linear Post (14, 18, 20, 22, 24, 26, 28 ft.)
- Triple Linear Post (28, 32 ft.)

SRS Sidewalls 5 in. Steel Double Wall Slide Rail Panels

Model (Ht. x Lg. x W)	Weight (Lbs.)	Shield Capacity (PSF)	Depth of Cut (Ft.) B	Soil Type C-60	Soil Type C-80
<i>4 ft. High Panels</i>					
SRUR-48-5	1,649	2,760	61	46	34
SRUR-410-5	2,010	2,760	61	46	34
SRUR-412-5	2,355	2,760	61	46	34
SRUR-414-5	2,726	2,760	61	46	34
SRUR-416-5	3,071	2,280	50	38	28
SRUR-418-5	3,480	1,800	40	30	22
SRUR-420-5	3,790	1,500	33	25	19
SRUR-422-5	4,900	1,380	31	23	18
SRUR-424-5	5,650	1,380	31	23	18
<i>8 ft. High Panels</i>					
SRUR-88-5	2,585	2,760	61	46	34
SRUR-810-5	3,282	2,520	56	42	31
SRUR-812-5	3,848	2,220	49	37	28
SRUR-814-5	4,237	2,460	55	41	31
SRUR-816-5	5,025	1,800	40	36	22
SRUR-818-5	6,120	1,680	37	28	21
SRUR-820-5	6,940	1,560	35	26	20
SRUR-820HD-5	7,690	1,800	40	30	22
SRUR-822-5	8,360	1,560	35	26	20
SRUR-822HD-5	10,286	1,800	40	30	22
SRUR-824-5	9,423	1,500	33	25	19
SRUR-824HD-5	11,421	1,800	40	30	22

Types of Slide Rail Systems:

CLEARSPAN



STANDARD 4-SIDED PIT



LINEAR MULTIPLE BAY



SHORE-TRAK



SLIDE RAIL SYSTEMS

STANDARD 3 - 4 SIDED PIT

UNIVERSAL COMPONENT STEEL TRENCH SHIELDING SYSTEM



Individual Slide Rail components offer the option of using lighter equipment when installing the system. The cost of rental and installation of the system is approximately 50 percent of steel sheeting.

- Installation and required excavation are completed together, saving time and reducing cost.
- Wall to wall working space is greater.
- Minimal vibration to adjacent buildings and surrounding structures.



SRS Sidewalls 5 in. Steel Double Wall Side Rail Panels

Model (Ht. x Lg. x W)	Weight (Lbs.)	Shield Capacity (PSF)	Depth of Cut (Ft.)			Soil Type
			B	C-60	C-80	
4 ft. High Panels						
SRUR-48-5	1,649	2,760	61	46	34	
SRUR-410-5	2,010	2,760	61	46	34	
SRUR-412-5	2,355	2,760	61	46	34	
SRUR-414-5	2,726	2,760	61	46	34	
SRUR-416-5	3,071	2,280	50	38	28	
SRUR-418-5	3,480	1,800	40	30	22	
SRUR-420-5	3,790	1,500	33	25	19	
SRUR-422-5	4,900	1,380	31	23	18	
SRUR-424-5	5,650	1,380	31	23	18	
8 ft. High Panels						
SRUR-88-5	2,585	2,760	61	46	34	
SRUR-810-5	3,282	2,520	56	42	31	
SRUR-812-5	3,848	2,220	49	37	28	
SRUR-814-5	4,237	2,460	55	41	31	
SRUR-816-5	5,025	1,800	40	36	22	
SRUR-818-5	6,120	1,680	37	28	21	
SRUR-820-5	6,940	1,560	35	26	20	
SRUR-820HD-5	7,690	1,800	40	30	22	
SRUR-822-5	8,360	1,560	35	26	20	
SRUR-822HD-5	10,286	1,800	40	30	22	
SRUR-824-5	9,423	1,500	33	25	19	
SRUR-824HD-5	11,421	1,800	40	30	22	

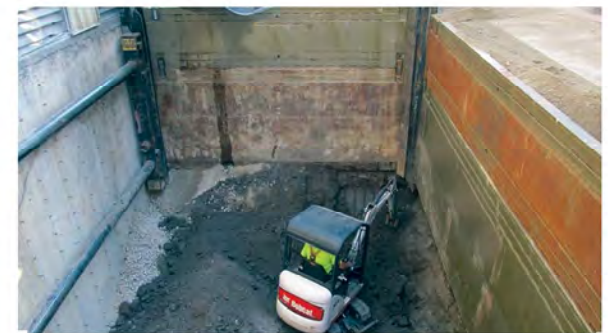
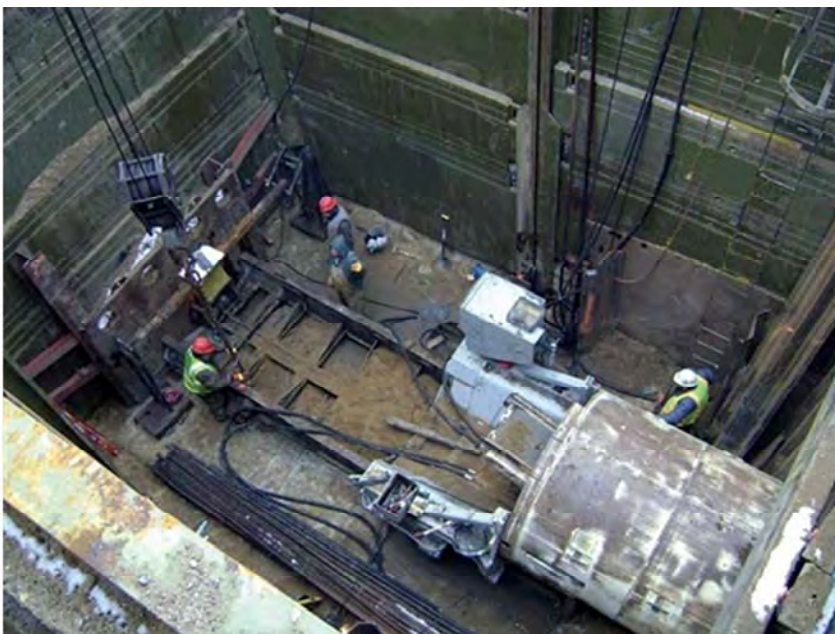
SLIDE RAIL SYSTEMS

4-SIDED PIT SHOWCASE

UNIVERSAL COMPONENT STEEL TRENCH SHIELDING SYSTEM



4-SIDED PIT SLIDERAIL



SLIDE RAIL SYSTEMS

4-SIDED PIT SHOWCASE

UNIVERSAL COMPONENT STEEL TRENCH SHIELDING SYSTEM



SLIDE RAIL SYSTEMS

CLEARSPAN

UNIVERSAL COMPONENT STEEL TRENCH SHIELDING SYSTEM



The ClearSpan™ System incorporates special walers for larger unobstructed four-sided working pits for site specific jobs.

- Minimal vibration to adjacent buildings and surrounding structures.
- Provides a large unobstructed working area.
- Cost effective compared to steel sheeting and other methods.
- Heavy duty panels provide minimal deflection.



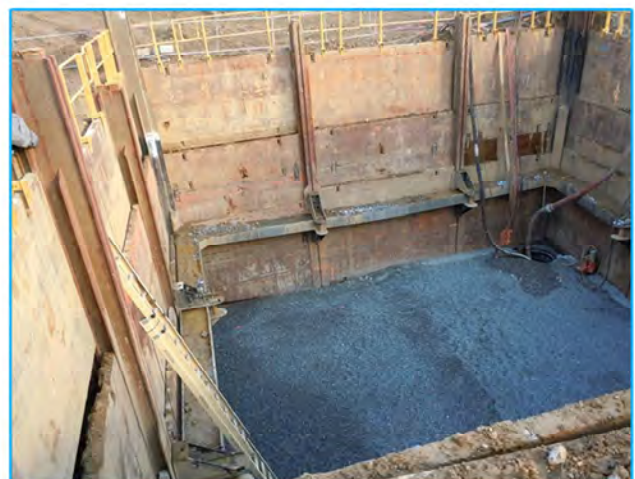
SRS Sidewalls 5 in. Steel Double Wall Side Rail Panels

Model (Ht. x Lg. x W)	Weight (Lbs.)	Shield Capacity (PSF)	Depth of Cut (Ft.)		Soil Type
			B	C-60	C-80
<i>4 ft. High Panels</i>					
SRUR-48-5	1,649	2,760	61	46	34
SRUR-410-5	2,010	2,760	61	46	34
SRUR-412-5	2,355	2,760	61	46	34
SRUR-414-5	2,726	2,760	61	46	34
SRUR-416-5	3,071	2,280	50	38	28
SRUR-418-5	3,480	1,800	40	30	22
SRUR-420-5	3,790	1,500	33	25	19
SRUR-422-5	4,900	1,380	31	23	18
SRUR-424-5	5,650	1,380	31	23	18
<i>8 ft. High Panels</i>					
SRUR-88-5	2,585	2,760	61	46	34
SRUR-810-5	3,282	2,520	56	42	31
SRUR-812-5	3,848	2,220	49	37	28
SRUR-814-5	4,237	2,460	55	41	31
SRUR-816-5	5,025	1,800	40	36	22
SRUR-818-5	6,120	1,680	37	28	21
SRUR-820-5	6,940	1,560	35	26	20
SRUR-820HD-5	7,690	1,800	40	30	22
SRUR-822-5	8,360	1,560	35	26	20
SRUR-822HD-5	10,286	1,800	40	30	22
SRUR-824-5	9,423	1,500	33	25	19
SRUR-824HD-5	11,421	1,800	40	30	22

SLIDE RAIL SYSTEMS

CLEARSPAN SHOWCASE

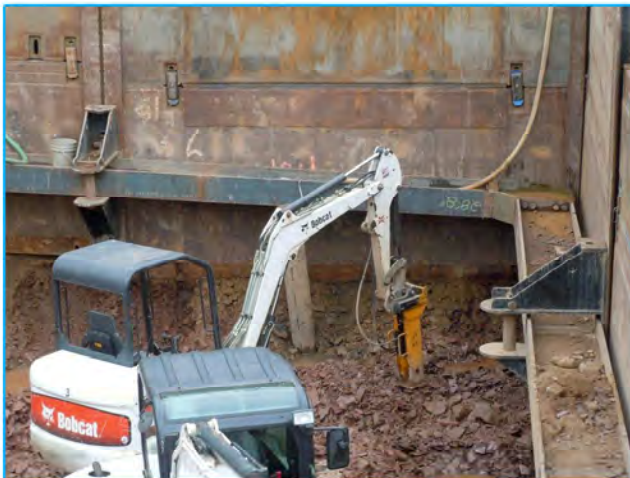
UNIVERSAL COMPONENT STEEL TRENCH SHIELDING SYSTEM



SLIDE RAIL SYSTEMS

CLEARSPAN SHOWCASE

UNIVERSAL COMPONENT STEEL TRENCH SHIELDING SYSTEM



SLIDE RAIL SYSTEMS

CLEARSPAN SHOWCASE

UNIVERSAL COMPONENT STEEL TRENCH SHIELDING SYSTEM



SLIDE RAIL SYSTEMS

LINEAR MULTIPLE BAY SYSTEM

UNIVERSAL COMPONENT STEEL TRENCH SHIELDING SYSTEM

This configuration is ideal when installing next to existing utilities and structures. Longer pipe may be installed by raising or removing the parallel beam spreader assembly.

- Innovative parallel beams eliminate post deflection during installation and removal. The roller design facilitates the vertical movement of the integrated beam and spreader unit.
- The parallel beam can be used with spreaders or arches.



SRS Sidewalls 5 in. Steel Double Wall Side Rail Panels

Model (Ht. x Lg. x W)	Weight (Lbs.)	Shield Capacity (PSF)	Depth of Cut (Ft.)		Soil Type
			B	C-60	C-80
4 ft. High Panels					
SRUR-48-5	1,649	2,760	61	46	34
SRUR-410-5	2,010	2,760	61	46	34
SRUR-412-5	2,355	2,760	61	46	34
SRUR-414-5	2,726	2,760	61	46	34
SRUR-416-5	3,071	2,280	50	38	28
SRUR-418-5	3,480	1,800	40	30	22
SRUR-420-5	3,790	1,500	33	25	19
SRUR-422-5	4,900	1,380	31	23	18
SRUR-424-5	5,650	1,380	31	23	18
8 ft. High Panels					
SRUR-88-5	2,585	2,760	61	46	34
SRUR-810-5	3,282	2,520	56	42	31
SRUR-812-5	3,848	2,220	49	37	28
SRUR-814-5	4,237	2,460	55	41	31
SRUR-816-5	5,025	1,800	40	36	22
SRUR-818-5	6,120	1,680	37	28	21
SRUR-820-5	6,940	1,560	35	26	20
SRUR-820HD-5	7,690	1,800	40	30	22
SRUR-822-5	8,360	1,560	35	26	20
SRUR-822HD-5	10,286	1,800	40	30	22
SRUR-824-5	9,423	1,500	33	25	19
SRUR-824HD-5	11,421	1,800	40	30	22

SLIDE RAIL SYSTEMS

LINEAR MULTIPLE BAY SHOWCASE

UNIVERSAL COMPONENT STEEL TRENCH SHIELDING SYSTEM



SLIDE RAIL SYSTEMS

LINEAR MULTIPLE BAY SHOWCASE

UNIVERSAL COMPONENT STEEL TRENCH SHIELDING SYSTEM



SLIDE RAIL SYSTEMS

SHEETING GUIDE FRAME

UNIVERSAL COMPONENT STEEL TRENCH SHIELDING SYSTEM



USES:

Shore-Trak™ Sheeting Guide Frame System is ideal for inner city excavations where existing utilities and other obstructions may cross the trench. The system includes steel sheeting guide frames which allow interlocking KD-6, or KD-750 sheeting to slide down through the frame before they touch the existing cross trench utility.

FEATURES:

- Guide frame lengths - 8 to 24 ft.
- Four-point lift system.
- Plug welding.
- High strength mill certified steel.
- Professional Engineer design and depth certification.

OPTIONS:

- Available for KD-6 or KD-750 Sheeting, 8 to 20 ft. lengths
- Can be used in combination with Slide Rail pit, ClearSpan™, or Linear or 4-sided Multi-Bay applications.
- Custom paint.
- Adjustable widths.
- Can be used with 8" schedule 80 spreaders



Guide Frame Tight to Excavation



Sheeting around Bore Casing



Sheeting Guide Frame/SRS Combo



4-Sided Pit with Sheeting Guide Frame



Shore-Trak™ Sheeting Guide Frame

Model (Ft.) (Lg.)	Description	Weight (Lbs.)
SRUR-SFRAME-12	12' Sheeting Frame	4,580
SRUR-SFRAME-14	14' Sheeting Frame	5,180
SRUR-SFRAME-16	16' Sheeting Frame	5,730
SRUR-SFRAME-18	18' Sheeting Frame	6,230
SRUR-SFRAME-20	20' Sheeting Frame	6,910
SRUR-SFRAME-24	24' Sheeting Frame	9,120

Sheeting

Model	Description (Lg.)	Weight (Lbs.)
10962	8' Long KD-6 Sheeting	580
10963	12' Long KD-6 Sheeting	668
10969	20' Long KD-6 Sheeting	775
10993	12' Long KD-750 Sheeting	884
10995	14' Long KD-750 Sheeting	985
10997	18' Long KD-750 Sheeting	1,080
10999	20' Long KD-750 Sheeting	1,198

SLIDE RAIL SYSTEMS

SLIDERAIL - SHORE-TRAK™ COMBINATION

UNIVERSAL COMPONENT STEEL TRENCH SHIELDING SYSTEM

The industry's only pre-fabricated, pre-engineered cross-trench utility shielding system, TrenchTech's innovative Slide Rail and Shore-Trak™ combination system allows for shielding around existing utilities while providing excellent protection for pipe installation crews.

- Shore-Trak™ guide frames connect to Slide Rail posts where utilities are located.
- Both systems can be used independently.
- Can be used in a pit, ClearSpan™, or Linear or 4-sided Multi-Bay application.

FEATURES:

- Guide frame lengths - 8 to 24 ft.
- Panel lengths - 8 to 24 ft.
- Panel widths - 24 in.
- Foam filler (panels).
- Four-point lift system.
- Vertical adjustment pins.
- Plug welding.
- High strength mill certified steel.
- Professional Engineer design and depth certification.



4-Sided Pit with Shore-Trak™



Shore-Trak™ with ClearSpan™



4-Sided Pit with Shore-Trak™



Shore-Trak™ in Linear Multi-Bay

OPTIONS:

- Interlocking panels.
- Custom paint.
- Adjustable widths.
- Spreader collars on guide frames for use with 8" schedule 80 spreaders.



Shore-Trak™ Guide Frame & Waler

Model (Ft.) (Lg.)	Description	Weight (Lbs.)
STWG-8	8' Waler & Guide Frame	2,500
STWG-12	12' Waler & Guide Frame	3,600
STWG-16	16' Waler & Guide Frame	4,800
STWG-20	20' Waler & Guide Frame	6,000
STWG-24	24' Waler & Guide Frame	7,200

Shore-Trak™ Walers

Model (Ft.) (Lg.)	Description	Weight (Lbs.)
STW-12	12' Waler	2,008
STW-16	16' Waler	2,624
STW-20	20' Waler	3,680
STW-24	24' Waler	5,536

Shore-Trak™ Panels 6 in. Double Wall

Model (Ft.) (W. x Lg.)	Description	Weight (Lbs.)
STP-2X10-IL	2' x 10' Interlocking Panel	825
STP-2X15-IL	2' x 15' Interlocking Panel	1,290
STP-2X20-IL	2' x 20' Interlocking Panel	1,633
STP-2X30-IL	2' x 30' Interlocking Panel	2,500

SLIDE RAIL SYSTEMS

SHOWCASE

UNIVERSAL COMPONENT STEEL TRENCH SHIELDING SYSTEM



ClearSpan



ClearSpan



ClearSpan



ClearSpan



ClearSpan



Multiple Bay



4-Sided Pit



3-Sided Multiple Bay

MANHOLE EXCAVATION BRACE

INTRODUCING:

TrenchTech, Inc. Manhole Excavation Braces, used in conjunction with appropriate sheeting, provide the active support necessary to secure safe excavations in less stable soils. Available in a wide variety of sizes and capacities, Manhole Braces are composed of modular sections for ease of assembly and transport.

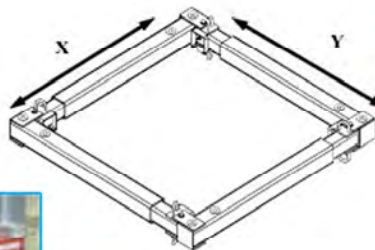
Manhole Braces combine the benefits of aluminum hydraulic shoring with the ruggedness of steel box tubing in the most effective support system ever developed for shaft excavations. Specifically designed for shoring square and rectangular excavations, this perimeter support system provides for an unobstructed shaft, and is generally used to secure pits for pump stations, the installation or rehabilitation of manholes, tanks and vaults, or the operation of trenchless technology equipment.

ADDITIONAL STANDARD MANHOLE BRACE FEATURES:

- 4-Way hydraulic support with high strength, telescoping steel tubing over-sleeves
- Non-rigid corner brackets
- Individual legs for on site assembly and easy transportation
- Quick connect pins and keepers
- Flexibility to fit square or rectangular excavations
- 4-Way hose bridal for simultaneous cylinder pressurization
- 4-corner lifting eye for installation and removal
- HVP-2000 high volume hand pump or HP-200 electric pump
- Easy to use release tools

SCENARIOS USING ONE SINGLE BRACE ASSEMBLY

- Type A soil: 25' x 25' x 16' deep using KD VI/8 sheeting 18' long (2' of toe)
- Type B soil: 30' x 30' x 12' deep using KD VI/8 sheeting 14' long (2' of toe)
- Type B soil: 20' x 20' x 18' deep using KD VI/8 sheeting 22' long (4' of toe)
- Type C soil: 20' x 20' x 15' deep using KD VI/8 sheeting 21' long (6' of toe)



FALL PROTECTION SYSTEM

TrenchTech's fall protection system consists of a pair of rails and a fall protection post. The rails are adjustable in width from 4' to 6', and must be used within those ranges.

The posts must be secured to the top of a slide rail panel or trench shield. They are to be secured using 5/8" - 11 ASTM A325 hex head cap screws. They shall be tightened to 154 foot-pounds of torque.

The system is designed to withstand a 300 pound load at any point on the system. Thus a 300 pound load could be supported anywhere onto the system.



FALL ARREST SYSTEM

TrenchTech's Fall Arrest System is an innovative product that protects workers from leading edge hazards. This product consists of fall protection system combined with a tie-off / anchor point, which is compatible with a retractable lifeline or shock-absorbing lanyard. Workers will be safe climbing up and down ladders (entering and exiting the trench).

FEATURES:

- Fully adjustable to fit trench boxes with walls up to 10.2" thick
- Solid steel structure to withstand harsh job site environments
- 3-part configuration to make transportation easy & safe
- Adjustable single point tie off for SRL's while climbing up & down ladders



STEEL TRENCH BOX

XLS

4 IN. STEEL SINGLE WALL TRENCH SHIELD

USES:

XLS 4 in. single wall steel trench shields are designed for use with medium crawler excavators in trenches where weight and space are critical.

FEATURES:

- Reinforced top rails.
- Adjustable and stackable.
- Thru-wall lifting lugs.
- Four-point lifting system.
- Thru-wall collars.
- Integral spreader collar post design.
- Pinned spreader connections.
- Strongest knife edge in the industry.
- High strength mill certified steel.
- Professional Engineer design and depth certification.

OPTIONS:

- Pushing blocks
- Pulling lugs
- Mud plate
- Corner brackets
- Custom spreader location
- Custom paint
- Stacking Pockets
- T-connection cut-outs

SPREADER OPTIONS:

- 4" schedule 40 (standard).
- 6" schedule 80.
- 4-pipe independent set.
- 5-pipe independent set.
- Custom collar sizes available.



XLS Sidewalls 4 in. Steel Single Wall Trench Shield

Model (Ht. x Lg.)	Weight (Lbs.)	Pipe Clearance "C" (In.)	Shield Capacity (PSF)	Depth of Cut (Ft.)			Soil Type
				B	C-60	C-80	
46 XLS	1,510	22	2,220	49	37	28	
48 XLS	1,800	22	2,220	49	37	28	
410 XLS	2,140	22	1,500	33	25	19	
412 XLS	2,460	22	1,020	23	17	13	
414 XLS	2,710	22	780	17	13	10	
416 XLS	3,060	22	660	15	11	8	
418 XLS	3,300	22	600	13	10	7	
420 XLS	3,560	22	480	11	8	6	
66 XLS	2,070	41	2,220	49	37	28	
68 XLS	2,460	41	2,220	49	37	28	
610 XLS	2,900	41	1,320	29	22	16	
612 XLS	3,470	41	1,080	24	18	13	
614 XLS	4,010	41	780	17	13	10	
616 XLS	4,530	41	660	15	11	8	
618 XLS	4,900	41	600	13	10	7	
620 XLS	5,370	41	480	11	8	6	
86 XLS	2,560	52	2,220	49	37	28	
88 XLS	2,930	52	1,500	33	25	19	
810 XLS	3,520	52	1,140	25	19	14	
812 XLS	4,140	52	840	19	14	10	
814 XLS	4,670	52	780	17	13	10	
816 XLS	5,290	52	660	15	11	8	
818 XLS	5,820	52	600	13	10	7	
820 XLS	6,340	52	480	11	8	6	

STEEL TRENCH BOX

XLD

4 IN. STEEL DOUBLE WALL TRENCH SHIELD



Uses:

The XLD 4 in. double wall steel shield is the most popular shield in the TrenchTech line. They are designed for use with medium crawler excavators in trenches where weight and space are critical.

Features:

- Reinforced top rails.
- Adjustable and stackable.
- Thru-wall lifting lugs.
- Four-point lifting system.
- Thru-wall collars.
- Triple vertical tube collar post design.
- Pinned spreader connections.
- Strongest knife edge in the industry.
- Plug welding on double wall shields.
- High strength mill certified steel.
- Professional Engineer design & depth certification.

Options:

- Pushing blocks.
- Pulling lugs.
- Foam filler.
- Mud plate.
- Corner brackets.
- Custom spreader location.
- Custom paint.
- Stacking Pockets.
- T-connection cut-outs.

Spreader Options:

- 8" schedule 80 (standard).
- 6" schedule 80.
- 4-pipe independent set.
- 5-pipe independent set.
- Custom collar sizes available.



XLD Sidewalls 4 in. Steel Double Wall Trench Shield

Model (Ht. x Lg.)	Weight (Lbs.)	Pipe Clearance "C" (In.)	Shield Capacity (PSF)	Depth of Cut (Ft.) Soil Type		
				B	C-60	C-80
48 XLD	2,520	22	2,760	61	46	34
410 XLD	2,850	22	2,760	61	46	34
412 XLD	3,380	22	2,760	61	46	34
414 XLD	3,740	22	2,040	45	34	25
416 XLD	4,130	22	1,500	33	25	19
420 XLD	4,970	22	1,200	27	20	15
424 XLD	6,130	22	840	19	14	10
68 XLD	3,430	41	2,760	61	46	34
610 XLD	4,120	41	2,760	61	46	34
612 XLD	4,790	41	2,460	55	41	31
614 XLD	5,380	41	1,920	43	32	24
616 XLD	5,970	41	1,440	32	24	18
618 XLD	6,690	41	1,260	28	21	16
620 XLD	7,220	41	1,380	31	23	17
622 XLD	8,100	41	1,024	23	17	13
624 XLD	8,680	41	900	20	15	11
88 XLD	4,380	60	2,760	61	46	34
810 XLD	5,090	60	2,640	59	44	33
812 XLD	5,800	60	2,040	45	34	25
814 XLD	6,580	60	1,740	39	29	22
816 XLD	7,270	60	1,560	35	26	20
818 XLD	8,250	60	1,380	31	23	17
820 XLD	8,920	60	1,320	29	22	16
822 XLD	9,830	60	900	20	15	11
824 XLD	11,420	60	840	19	14	10
108 XLD	5,220	69	2,760	61	46	34
1010 XLD	6,020	69	2,640	59	44	33
1012 XLD	7,000	69	1,980	44	33	25
1014 XLD	7,940	69	1,320	29	22	16
1016 XLD	9,040	69	1,320	29	22	16
1020 XLD	10,890	69	960	21	16	12
1024 XLD	12,910	69	900	20	15	11

STEEL TRENCH BOX



HT6

6 IN. HI-TENSILE STEEL DOUBLE WALL TRENCH SHIELD

USES:

The HT6 is the most versatile steel shield available. It combines depth capability with lightweight narrow sidewalls. Designed for medium range excavators.

FEATURES:

- Reinforce Top Rails
- Heavy Duty 3/8" top tube
- Adjustable and stackable
- Thru-wall lifting lugs
- Four-point lifting system
- Thru-wall collars
- Triple vertical tube collar post design
- Pinned spreader connections
- Strongest knife edge in the industry
- Plug welding on double wall shields
- High strength mill certified steel
- Professional Engineer design and depth certification

OPTIONS:

- Pushing blocks
- Pulling lugs
- Foam filler
- Mud plate
- Corner brackets
- Custom spreader location
- Custom paint
- Stacking Pockets
- T-connection cut-outs

SPREADER OPTIONS:

- 8" schedule 80 (standard)
- 3-pipe and mud plate set
- 4-pipe independent set
- 4-pipe connected set
- 5-pipe independent set
- 5-pipe connected set



HT6 Sidewalls 6 in. Steel Double Wall Trench Shield

Model (Ht. x Lg.)	Weight (Lbs.)	Pipe Clearance "C" (In.)	Shield Capacity (PSF)	Depth of Cut (Ft.) Soil Type		
				B	C-60	C-80
412 HT6	4,090	22	2,100	47	35	26
416 HT6	5,310	22	1,860	41	31	23
418 HT6	5,890	22	1,680	37	28	21
420 HT6	6,370	22	1,440	32	24	18
424 HT6	7,510	22	1,140	25	19	14
427 HT6	8,350	22	780	17	13	10
616 HT6	7,000	41	2,340	52	39	30
618 HT6	7,680	41	1,680	37	28	21
620 HT6	8,330	41	1,440	32	24	18
622 HT6	9,130	41	1,200	27	20	15
624 HT6	10,210	41	1,140	25	19	14
626 HT6	10,890	41	900	20	15	11
627 HT6	11,140	41	900	20	15	11
88 HT6	4,860	64	2,880	64	48	36
812 HT6	6,800	64	2,280	50	38	28
814 HT6	7,580	64	2,100	47	35	26
816 HT6	8,440	64	1,980	44	33	25
818 HT6	9,350	64	1,860	41	31	23
820 HT6	10,410	64	1,560	34	26	19
822 HT6	11,230	64	1,200	27	20	15
824 HT6	12,290	64	1,140	25	19	14
826 HT6	13,110	64	960	21	16	12
827 HT6	13,240	64	780	17	13	10
1012 HT6	8,460	85	2,400	53	40	30
1016 HT6	10,380	85	1,680	37	28	21
1018 HT6	11,560	85	1,560	34	26	19
1020 HT6	12,900	85	1,440	32	24	18
1022 HT6	14,220	85	1,200	27	20	15
1024 HT6	15,890	85	1,200	27	20	15
1027 HT6	17,630	85	960	21	16	12

VISIT
WWW.SHORINGSOLUTIONS.COM

STEEL TRENCH BOX



HT8

8 IN. HI-TENSILE STEEL DOUBLE WALL TRENCH SHIELD

USES:

The HT8 is an excellent choice for deeper, more demanding work. The 8 in. double wall construction minimizes sidewall deflection and provides extended shield durability.

FEATURES:

- Reinforced top rails.
- Heavy Duty 3/8" top tube
- Adjustable and stackable.
- Thru-wall lifting lugs.
- Four-point lifting system.
- Thru-wall collars.
- Triple vertical tube collar post design.
- Pinned spreader connections.
- Strongest knife edge in the industry.
- Plug welding on double wall shields.
- High strength mill certified steel.
- Professional Engineer design and depth certification.

OPTIONS:

- Pushing blocks.
- Pulling lugs.
- Foam filler.
- Mud plate.
- Corner brackets.
- Custom spreader location.
- Custom paint.
- Stacking Pockets.
- T-connection cut-outs.

SPREADER OPTIONS:

- 8" schedule 80 (standard).
- 3-pipe and mud plate set.
- 4-pipe independent set.
- 4-pipe connected set.
- 5-pipe independent set.
- 5-pipe connected set.



HT8 Sidewalls 8 in. Steel Double Wall Trench Shield

Model (Ht. x Lg.)	Weight (Lbs.)	Pipe Clearance "C" (In.)	Shield Capacity (PSF)	Depth of Cut (Ft.) Soil Type		
				B	C-60	C-80
416 HT8	6,150	22	2,580	57	43	32
420 HT8	7,120	22	1,800	40	30	22
424 HT8	8,360	22	1,260	28	21	16
427 HT8	9,280	22	1,020	23	17	13
430 HT8	10,080	22	840	10	14	10
616 HT8	7,930	41	2,640	59	44	33
620 HT8	9,210	41	1,800	40	30	22
624 HT8	11,080	41	1,260	28	21	16
627 HT8	12,330	41	1,020	23	17	13
630 HT8	13,560	41	1,020	23	17	13
814 HT8	8,570	64	2,520	56	42	31
816 HT8	9,150	64	2,580	57	43	32
820 HT8	10,960	64	2,100	46	35	26
822 HT8	12,320	64	1,560	19	26	19
824 HT8	13,420	64	1,500	33	25	19
827 HT8	14,570	64	1,140	25	19	14
830 HT8	15,930	64	840	19	14	10
1016 HT8	12,480	85	2,220	49	37	28
1020 HT8	14,740	85	1,920	42	32	24
1024 HT8	16,270	85	1,680	37	28	21
1027 HT8	18,780	85	1,200	27	20	15
1030 HT8	20,570	85	1,020	23	17	13

VISIT
WWW.SHORINGSOLUTIONS.COM

STEEL TRENCH BOX

HDHT8

8 IN. HEAVY DUTY HI-TENSILE STEEL DOUBLE WALL TRENCH SHIELD

USES:

This 8 in. double wall trench shield is available with panels up to 12 ft. high and 36 ft. long. The HDHT8 offers maximum depth ratings to handle the most demanding jobs with larger excavators.

FEATURES:

- Reinforced top rails.
- Heavy Duty 3/8" top tube
- Adjustable and stackable.
- Thru-wall lifting lugs.
- Four-point lifting system.
- Thru-wall collars.
- Triple vertical tube collar post design.
- Pinned spreader connections.
- Strongest knife edge in the industry.
- Plug welding on double wall shields.
- High strength mill certified steel.
- Professional Engineer design and depth certification.

OPTIONS:

- Pushing blocks.
- Pulling lugs.
- Foam filler.
- Mud plate.
- Corner brackets.
- Custom spreader location.
- Custom paint.
- Stacking Pockets.
- T-connection cut-outs.

SPREADER OPTIONS:

- 8" schedule 80 (standard).
- 10" schedule 120.
- 3-pipe and mud plate set.
- 4-pipe independent set.
- 4-pipe connected set.
- 5-pipe independent set.
- 5-pipe connected set.

VISIT

WWW.SHORINGSOLUTIONS.COM



HDHT8 Sidewalls 8 in. Heavy Duty Steel Double Wall Trench Shield

Model (Ht. x Lg.)	Weight (Lbs.)	Pipe Clearance "C" (In.)	Shield Capacity (PSF)	Depth of Cut (Ft.)		Soil Type
				B	C-60	C-80
616 HDHT8-58	7,500	41	3,480	77	58	43
620 HDHT8-40	9,700	41	2,400	53	40	30
624 HDHT8-30	12,340	41	1,800	40	30	22
626 HDHT8-27	14,300	41	1,620	36	27	20
627 HDHT8-25	14,870	41	1,500	33	25	19
628 HDHT8-24	14,975	41	1,440	32	24	18
630 HDHT8-20	16,460	41	1,200	27	20	15
816 HDHT8-58	9,770	64	3,480	77	58	43
820 HDHT8-40	12,300	64	2,400	53	40	30
824 HDHT8-30	14,500	64	1,800	40	30	22
826 HDHT8-30	20,100	64	1,800	40	30	22
827 HDHT8-27	18,215	64	1,620	36	27	20
828 HDHT8-24	21,300	64	1,440	32	24	18
830 HDHT8-20	19,995	64	1,200	27	20	15
1016HDHT8-60	13,790	85	3,600	80	60	45
1020HDHT8-41	16,920	85	2,460	55	41	31
1024HDHT8-31	17,490	85	1,860	41	31	23
1026HDHT8-28	19,560	85	1,620	36	27	20
1027HDHT8-25	20,110	85	1,500	33	25	19
1028HDHT8-24	22,310	85	1,440	32	24	18
1030HDHT8-20	23,400	85	1,200	27	20	15

STEEL TRENCH BOX



PREMIUM XL

10 IN. & 12 IN. HI-TENSILE STEEL DOUBLE WALL TRENCH SHIELD

USES:

Premium XL shields are engineered to withstand heavy soil pressure. This model is designed to be used with high capacity excavators. With 10 or 12 in. thick sidewalls and heavy duty spreaders, the shield is capable of handling deep, wet soil pressures on tough jobs.

FEATURES:

- Extra heavy steel plate and structural members.
- Extra heavy duty spreader system.
- Reinforced top rails.
- Heavy Duty 3/8" top tube
- Adjustable and stackable.
- Thru-wall lifting lugs.
- Four-point lift system.
- Thru-wall collars.
- Triple vertical tube collar post design.
- Pinned spreader connections.
- Strongest knife edge in the industry.
- Plug welding on double wall shields.
- High strength mill certified steel.
- Professional Engineer design and depth certification.

OPTIONS:

- Pushing blocks.
- Pulling lugs.
- Foam filler.
- Mud plate.
- Corner brackets.
- Custom spreader location.
- Custom paint.
- Stacking Pockets.
- T-connection cut-outs.

SPREADER OPTIONS:

- 10" schedule 120 (standard).
- 3-pipe and mud plate set.
- 4-pipe independent set.
- 4-pipe connected set.
- 5-pipe independent set.
- 5-pipe connected set.



HT12 - 1050

PXL Sidewall 10 in. Steel Double Wall Trench Shield

Model (Ht. x Lg.)	Weight (Lbs.)	Pipe Clearance "C" (In.)	Shield Capacity (PSF)	Depth of Cut (Ft.) Soil Type		
				B	C-60	C-80
420 PXL	9,180	22	2,820	63	47	35
424 PXL	10,670	22	2,460	55	41	31
427 PXL	13,200	22	1,980	44	33	25
430 PXL	14,630	22	1,620	36	27	20
432 PXL	15,050	22	1,440	32	24	18
620 PXL	12,910	41	2,280	51	38	28
624 PXL	14,500	41	1,560	35	26	19
627 PXL	16,600	41	1,200	27	20	15
630 PXL	18,060	41	960	21	16	12
632 PXL	19,070	41	840	19	14	10
820 PXL	15,050	65	2,460	55	41	31
824 PXL	17,450	65	1,680	37	28	21
827 PXL	19,400	65	1,260	28	21	16
830 PXL	21,070	65	1,020	23	17	13
832 PXL	22,320	65	900	20	15	11
1020 PXL	18,318	85	2,160	48	36	27
1024 PXL	21,380	85	1,800	40	30	22
1027 PXL	23,700	85	1,380	31	23	17
1030 PXL	25,940	85	1,020	23	17	13

HT12 Sidewall 12 in. Steel Double Wall Trench Shield

1050 HT12	41,050	85	600	13	10	8
-----------	--------	----	-----	----	----	---

STEEL TRENCH BOX

INNER SHIELD LINER

4 IN. HI-TENSILE STEEL DOUBLE WALL TRENCH SHIELD

USES:

TrenchTech's Inner Shield Liner™ is used to prevent under-box caving of unstable or wet soil. The ISL fits inside of a regular trench shield and is much faster and safer to use than steel plates and sheeting which are not recommended. It also increases the speed of placing pipe to grade.

FEATURES:

- Reinforced top rails.
- Foam filler.
- Mud plate.
- Adjustable.
- Thru-wall lifting lugs.
- Four-point lift system.
- Thru-wall collars.
- Triple vertical tube collar post design.
- Pinned spreader connections.
- Strongest knife edge in the industry.
- Plug welding.
- High strength mill certified steel.
- Professional Engineer design and depth certification.

OPTIONS:

- Pushing blocks.
- Custom spreader location.

SPREADER OPTIONS:

- 8" schedule 80 (standard).
- 3-pipe and mud plate set (standard).
- 4-pipe independent set.



Inner Shield Liner 4 in. Steel Double Wall Shield

Model	Size (ft.) (Ht. x Lg.)	Weight (Lbs.)	Shield Capacity (PSF)	Depth of Cut (Ft.)		Recom. Length Outer Shield (Ft.)
				C-60	C-80	
614SL4-20	6 x 14	5,040	1,200	20	15	18 - 20
614SL4-25	6 x 14	5,380	1,500	25	19	18 - 20
616SL4-20	6 x 16	5,970	1,200	20	15	20 - 22
616SL4-25	6 x 16	6,480	1,500	25	19	20 - 22
618SL4-20	6 x 18	6,690	1,200	20	15	22 - 24
618SL4-25	6 x 18	7,570	1,500	25	19	22 - 24
620SL4-20	6 x 20	7,220	1,200	20	15	24 - 26
620SL4-25	6 x 20	8,190	1,500	25	19	24 - 26

HOW TO SIZE A TRENCH SHIELD

SOIL CLASSIFICATIONS, CALCULATING DEPTH RATINGS, AND SIZING A SHIELD

HOW TO SIZE A TRENCH BOX

Depth of cut* _____
Soil conditions* _____
Type A (25#) _____
Type B (45#) _____
Type C-60 (60#) _____
Type C-80 (80#) _____
Hydrostatic _____ * see depth certification chart
Outside Pipe Diameter _____
(Shield must be a minimum of 12 in. wider than the pipe.)
Pipe Length _____ (Shield must be 2 to 4 ft. longer than the pipe)
Bucket Width _____ (Inside shield: 12 in. less than shield.)
Machine Lift Capacity _____ (1.5 times shield weight at 20 degree radius.)

The following will explain how to determine the specifications listed above.

HOW TO DETERMINE THE DEPTH OF CUT:

- Slope must start 18 in. or 1½ ft. below the top of the Shield

HOW TO DETERMINE THE WIDTH OF A TRENCH SHIELD:

- Trench Shield width determined by Outside Diameter (OD) of the pipe or the OD of the excavator bucket
- Allow 6 in. of clearance on each side of pipe bell
- Shield should be a minimum of 12 in. wider than the excavator bucket OD

HOW TO DETERMINE THE LENGTH OF A TRENCH SHIELD:

- Inside length clearance of pipe is approximately 2 ft. less than the overall length of the shield
- Shield must be 2 to 4 ft. longer than the pipe

HOW TO DETERMINE THE MACHINE LIFT CAPACITY:

- Lift capacity is 1.5 times the shield weight at 20 ft. radius at grade

CALCULATING DEPTH RATINGS:

PSF ratings and depths are based on temporary loading.

LATERAL PRESSURE PER FOOT OF DEPTH:

- Type "A" Soil = 25 lbs.
- Type "B" Soil = 45 lbs.
- Type "C-60" Soil = 60 lbs.
- Type "C-80" Soil = 80 lbs.

DEPTH RATING USING SHIELD CAPACITY (E.G. 1200 LBS.):

- 1200 / 25 = 48 ft.
- 1200 / 45 = 27 ft.
- 1200 / 60 = 20 ft.
- 1200 / 80 = 15 ft.

SOIL DEFINITIONS:

- Apparent cohesion
- Cemented soil
- Layered soil
- Plastic
- Saturated soil
- Submerged soil

NO SOIL IS TYPE "A" IF:

- It is fissured
- It is subject to vibration
- It has been previously disturbed
- It is part of a sloped, layered system which dips into the excavation on a slope of four horizontal to one vertical 4H:1V] or greater
- It is subject to other factors requiring classification as less stable

TYPE "B" SOIL:

- Cohesive soil with unconfined compressive strength greater than 0.5 tons per square foot (tsf). but less than 1.5 tsf.
- Granular cohesion-less soils, e.g., gravel, silt, silt loam, sandy loam
- Type "A" fissured or subject to vibration
- Unstable dry rock
- It is part of a sloped, layered system which dips into the excavation on a slope less steep than 4H:1V, but only if the material would otherwise be classified as Type "B"

TYPE "C" SOIL:

- Cohesive/non-cohesive soils with unconfined compressive strength of 0.5 tsf or less
- Granular soils including gravel, sand, and loamy sand
- Submerged soil or soil from which water is freely seeping
- Submerged rock that is not stable
- Sloped, layered system which slopes into an excavation at an angle of 4H:1V or steeper.

MANHOLE TRENCH BOX

4 IN SINGLE AND DOUBLE WALL MANHOLE SHIELDS

USES:

TrenchTech's specifically designed Manhole Shields are available with 4 in. wide steel panels in single or double walled models. They can be used in two, three, or four-sided configurations with an independent spreader system.

FEATURES:

- Adjustable and stackable
- Reinforced top rails
- Thru-wall lifting lugs
- Four-point lift system
- Thru-wall collars
- Pinned spreader connections
- Strongest knife edge in the industry
- Plug welding on double wall shields
- High strength mill certified steel
- Professional Engineer design and depth certification.

OPTIONS:

- Two, three, and four-sided shields
- Tapping shields
- Corner End Plate Style Ends
- Wrap Around Corner End Plates
- T-connection cut-outs
- Removable Corner End Plates
- Pushing blocks
- Foam filler
- Corner brackets
- Custom paint

SPREADER OPTIONS:

- 4" schedule 40
- 6" schedule 80
- 8" schedule 80

VISIT

WWW.SHORINGSOLUTIONS.COM



Two-Sided Manhole Shield (MHXLD)



Three-Sided Manhole Shield



Tap Box with cut-outs



Four-Sided Manhole Shield



MHXLD-CEP



MHXLDW

MANHOLE TRENCH BOX

4 IN SINGLE AND DOUBLE WALL MANHOLE SHIELDS

Manhole Shield w/o Corner End Plates 4 in. Single and Double Wall Shield						
Model (Ht. x Lg.)	Weight (Lbs.)	Pipe Clearance "C" (In.)	Shield Capacity (PSF)	Depth of Cut (Ft.)		Soil Type
				B	C-60	C-80
<i>4 in. Single Wall</i>						
88 MHXLS	2,500	52	840	19	14	10
810 MHXLS	2,950	52	660	15	11	8
812 MHXLS	3,580	52	600	13	10	7
814 MHXLS	4,090	52	540	12	9	7
816 MHXLS	4,520	52	480	11	8	6
<i>4 in. Double Wall</i>						
88 MHXLD	3,970	52	2,220	45	37	28
810 MHXLD	4,640	52	1,980	41	33	25
812 MHXLD	5,660	52	1,680	35	28	21
814 MHXLD	6,370	52	1,440	29	24	18
816 MHXLD	7,050	52	1,320	27	22	16



Manhole Shield w/ Corner End Plates						
Model (Ht. x Lg.)	Weight (Lbs.)	Pipe Clearance "C" (In.)	Shield Capacity (PSF)	Depth of Cut (Ft.)		Soil Type
				B	C-60	C-80
<i>4 in. Single Wall</i>						
88 MHXLS-CEP	3,600	52	840	19	14	10
810 MHXLS-CEP	4,050	52	660	15	11	8
812 MHXLS-CEP	4,680	52	600	13	10	7
814 MHXLS-CEP	5,190	52	540	12	9	7
816 MHXLS-CEP	5,620	52	480	11	8	6
<i>4 in. Double Wall</i>						
88 MHXLD-CEP	5,070	52	2,220	45	37	28
810 MHXLD-CEP	5,740	52	1,980	41	33	25
812 MHXLD-CEP	6,760	52	1,680	35	28	21
814 MHXLD-CEP	7,470	52	1,440	29	24	18
816 MHXLD-CEP	8,150	52	1,320	27	22	16



Manhole Shield w/ Wrap Around Corner End Plates						
Model (Ht. x Lg.)	Weight (Lbs.)	Pipe Clearance "C" (In.)	Shield Capacity (PSF)	Depth of Cut (Ft.)		Soil Type
				B	C-60	C-80
<i>4 in. Single Wall</i>						
88 MHXLSW	4,900	52	840	19	14	10
810 MHXLSW	5,370	52	660	15	11	8
812 MHXLSW	5,940	52	600	13	10	7
814 MHXLSW	6,410	52	540	12	9	7
816 MHXLSW	6,980	52	480	11	8	6
<i>4 in. Double Wall</i>						
88 MHXLDW	5,130	52	1,320	29	22	16
810 MHXLDW	5,840	52	1,320	29	22	16
812 MHXLDW	6,430	52	1,320	29	22	16
814 MHXLDW	7,300	52	1,320	29	22	16
816 MHXLDW	7,990	52	1,320	29	22	16



VISIT WWW.SHORINGSOLUTIONS.COM

ARCHES

FOUR STYLES OF HI-CLEARANCE ARCHES

USES:

TrenchTech's Hi-Clearance Arch spreader system is available in four styles: Pin-in-Place Arch, Tubular Arch, Wide Flange Arch, and Box Culvert Arch. The design allows maximum pipe and structure clearance with minimum trench width. The Hi-Clearance Arch system is designed for use with most TrenchTech's trench shields.

PIN-IN-PLACE ARCH

Pin-in-Place arches are interchangeable with spreaders and fit over standard sidewall collars. The arches provide 91 in. of clearance on 8 ft. tall XLD, HT6, and HT8 shields; and 115 in. of clearance on 10 ft. tall HT6, and HT8 shields.

WIDE FLANGE ARCH

Excellent for deep cuts, wet soil and other tough jobs. Wide Flange Arches provide maximum structural strength to withstand pressures of large, deep excavations.

TUBULAR ARCH

Perfect for medium depth jobs. Tubular Arches provide excellent clearance and visibility for excavator operators.

BOX CULVERT ARCH

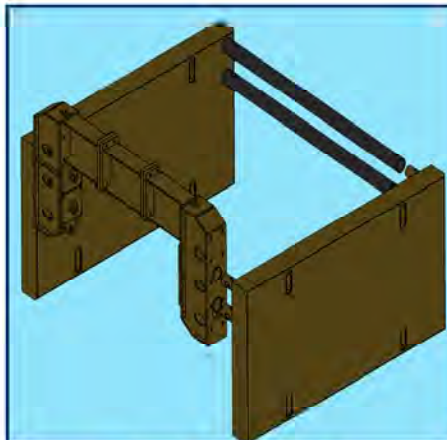
The Box Culvert Arch system is designed to allow clearance for square or rectangular box culvert installations.



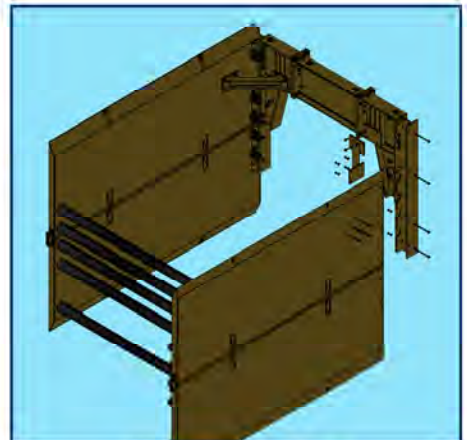
Pin-in-Place Arch



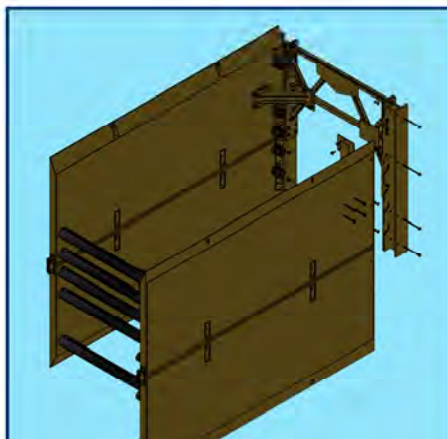
Two Shields w/ Adjoined Arches



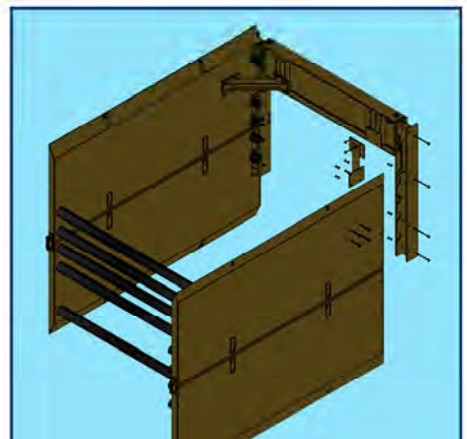
Pin-in-Place Arch



Wide Flange Arch



Tubular Arch



Box Culvert Arch

SPREADERS

SPREADER SETS FOR STEEL TRENCH SHIELDS

USES:

TrenchTech's spreader sets are available in a wide variety of combinations for any size and type of shield.

FEATURES:

- All spreaders meet A.S.T.M

REQUIREMENTS:

- Spreaders include pins and keepers
- Custom sizes upon request

OPTIONS:

- 4" schedule 40
- 5" schedule 80
- 6" schedule 80
- 8" schedule 80
- 10" schedule 120
- 3-pipe and mud plate set
- 4-pipe independent set
- 4-pipe connected set
- 5-pipe independent set
- 5-pipe connected set



Spreader Sets 4" Sch 40 - 4 Pipe "I"

Model	Inside Width (In.)	Weight (Lbs.)
SPXLS-24-4	24	120
SPXLS-30-4	30	140
SPXLS-36-4	36	160
SPXLS-42-4	42	180
SPXLS-48-4	48	200
SPXLS-54-4	54	220
SPXLS-60-4	60	250
SPXLS-72-4	72	290
SPXLS-84-4	84	330
SPXLS-96-4	96	370
SPXLS-108-4	108	420
SPXLS-120-4	120	470
SPXLS-144-4	144	560

Spreader Set 6" Sch 80 - 4 Pipe "I"

Model	Inside Width (In.)	Weight (Lbs.)
SP6-24-4	24	280
SP6-30-4	30	335
SP6-36-4	36	390
SP6-42-4	42	450
SP6-48-4	48	510
SP6-54-4	54	560
SP6-60-4	60	620
SP6-72-4	72	735
SP6-84-4	84	845
SP6-96-4	96	960
SP6-108-4	108	1,080
SP6-120-4	120	1,200
SP6-144-4	144	1,320

Spreader Set 5" Sch 80 - 4 Pipe "I"

Model	Inside Width (In.)	Weight (Lbs.)
SP5-24-4	24	170
SP5-30-4	30	210
SP5-36-4	36	310
SP5-42-4	42	360
SP5-48-4	48	400
SP5-60-4	60	480
SP5-72-4	72	560
SP5-84-4	84	700
SP5-96-4	96	800

Spreader Set 4" Sch 40 - 5 Pipe "I"

Model	Inside Width (In.)	Weight (Lbs.)
SPXLS-24-5	24	150
SPXLS-30-5	30	175
SPXLS-36-5	36	200
SPXLS-42-5	42	225
SPXLS-48-5	48	250
SPXLS-54-5	54	275
SPXI S-60-5	60	310
SPXLS-72-5	72	360
SPXLS-84-5	84	410
SPXLS-96-5	96	460
SPXLS-108-5	108	525
SPXLS-120-5	120	590
SPXLS-144-5	144	700

Spreader Set 6" Sch 80 - 5 Pipe "I"

Model	Inside Width (In.)	Weight (Lbs.)
SP6-24-5	24	350
SP6-30-5	30	420
SP6-36-5	36	490
SP6-42-5	42	560
SP6-48-5	48	640
SP6-54-5	54	700
SP6-60-5	60	775
SP6-72-5	72	920
SP6-84-5	84	1,060
SP6-96-5	96	1,200
SP6-108-5	108	1,350
SP6-120-5	120	1,500
SP6-144-5	144	1,650

Spreader Set 10" Sch 120 - 4 Pipe "C"

Model	Inside Width (In.)	Weight (Lbs.)
SPPXL-48-4	48	1,700
SPPXL-60-4	60	2,050
SPPXL-72-4	72	2,415
SPPXL-84-4	84	2,770
SPPXL-96-4	96	3,130
SPPXL-108-4	108	3,480
SPPXL-120-4	120	3,840
SPPXL-144-4	144	4,550

Spreader Set 10" Sch 120 - 5 Pipe "C"

Model	Inside Width (In.)	Weight (Lbs.)
SPPXL-48-5	48	2,100
SPPXL-60-5	60	2,550
SPPXL-72-5	72	2,990
SPPXL-84-5	84	3,440
SPPXL-96-5	96	3,880
SPPXL-108-5	108	4,330
SPPXL-120-5	120	4,800
SPPXL-144-5	144	5,685

SPREADERS

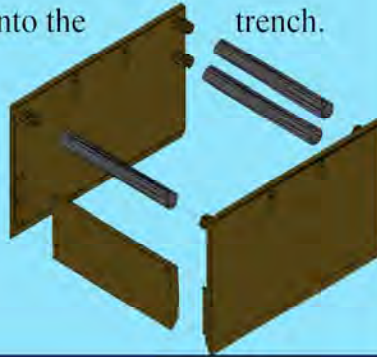
SPREADER SETS FOR STEEL TRENCH SHIELDS

Spreader Sets 3-Pipe w/ Mud Plate

Model	Inside Width (In.)	Weight (Lbs.)
SPMP-24	24	570
SPMP-30	30	670
SPMP-36	36	770
SPMP-42	42	885
SPMP-48	48	990
SPMP-54	54	1,090
SPMP-60	60	1,195
SPMP-66	66	1,295
SPMP-72	72	1,400
SPMP-78	78	1,510
SPMP-84	84	1,615
SPMP-90	90	1,710
SPMP-96	96	1,820
SPMP-102	102	1,980
SPMP-108	108	2,140
SPMP-120	120	2,365
SPMP-132	132	2,580
SPMP-144	144	2,795

3-Pipe with Mud Plate

Patented 3-pipe spreader system with mud plate offers excellent protection against water, mud, and sand encroachment into the trench.



Spreader Sets Mud Plate Only

Model	Inside Width (In.)	Weight (Lbs.)
SPMPO-24	24	260
SPMPO-30	30	300
SPMPO-36	36	335
SPMPO-42	42	380
SPMPO-48	48	420
SPMPO-54	54	455
SPMPO-60	60	495
SPMPO-66	66	530
SPMPO-72	72	570
SPMPO-78	78	615
SPMPO-84	84	655
SPMPO-90	90	695
SPMPO-96	96	730
SPMPO-102	102	825
SPMPO-108	108	920
SPMPO-120	120	1,015
SPMPO-132	132	1,100
SPMPO-144	144	1,185

Spreader Rack

Design for organized storage and movement of spreader pipes by a forklift.



A-Frame Design

Cantilever Design



Spreader Rack Fork-Lift

Model	Description	Wt. (Lbs.)
SP-RACK-48	48" Fork Rack	300
SP-RACK-96	96" Fork Rack	355

Spreader Rack A-Frame

Model	Description	Wt. (Lbs.)
RACK-A-3	3 Shelf Rack	3,100
RACK-A-4	4 Shelf Rack	4,000

Spreader Rack Cantilever

Model	Description	Wt. (Lbs.)
RACK-C-BASE	Rack Base	1,000
RACK-C-S3	36" Rack Struts	270
RACK-C-S4	48" Rack Struts	300
RACK-C-S5	60" Rack Struts	315
RACK-C-S6	72" Rack Struts	330
RACK-C-U	Rack Up-Right	695

SPREADERS

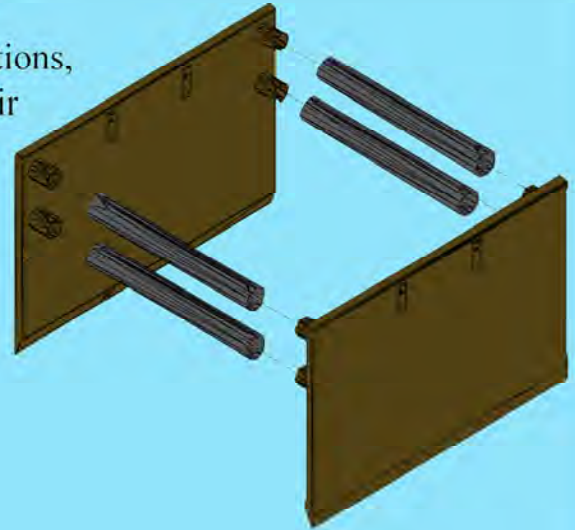
SPREADER SETS FOR STEEL TRENCH SHIELDS

Spreader Sets 8" Sch 80 4-Pipe "I"

Model	Inside Width (In.)	Weight (Lbs.)
SP-24-4	24	415
SP-30-4	30	500
SP-36-4	36	585
SP-42-4	42	675
SP-48-4	48	760
SP-54-4	54	850
SP-60-4	60	935
SP-66-4	66	1,020
SP-72-4	72	1,105
SP-78-4	78	1,195
SP-84-4	84	1,280
SP-90-4	90	1,370
SP-96-4	96	1,455
SP-102-4	102	1,540
SP-108-4	108	1,630
SP-120-4	120	1,800
SP-132-4	132	1,975
SP-144-4	144	2,150
SP-156-4	156	2,320
SP-168-4	168	2,495
SP-180-4	180	2,670
SP-192-4	192	2,850
SP-204-4	204	3,015
SP-240-4	240	3,535

4-Pipe Independent

Excellent for stacking sections, manhole shields, and repair work because both ends allow for pipe clearance.
*Not recommended for large shields.

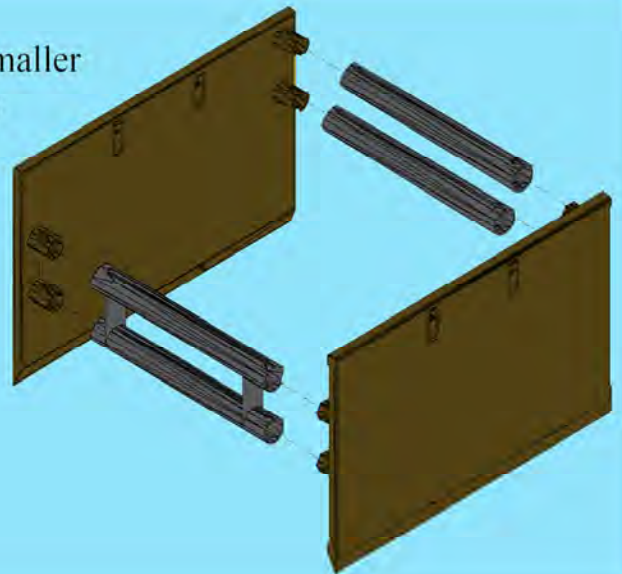


Spreader Sets 8" Sch 80 4-Pipe "C"

Model	Inside Width (In.)	Weight (Lbs.)
SP-24-4C	24	470
SP-30-4C	30	558
SP-36-4C	36	644
SP-42-4C	42	730
SP-48-4C	48	818
SP-54-4C	54	904
SP-60-4C	60	992
SP-66-4C	66	1,078
SP-72-4C	72	1,164
SP-78-4C	78	1,252
SP-84-4C	84	1,338
SP-90-4C	90	1,424
SP-96-4C	96	1,512
SP-102-4C	102	1,598
SP-108-4C	108	1,686
SP-120-4C	120	1,858
SP-132-4C	132	2,032
SP-144-4C	144	2,206
SP-156-4C	156	2,380
SP-168-4C	168	2,554
SP-180-4C	180	2,726
SP-192-4C	192	2,900
SP-204-4C	204	3,074
SP-240-4C	240	3,594

4-Pipe Connected

Ideal for medium and smaller trench shields. Provides for boom and bucket clearance at the front while allowing excellent excavator visibility.



SPREADERS

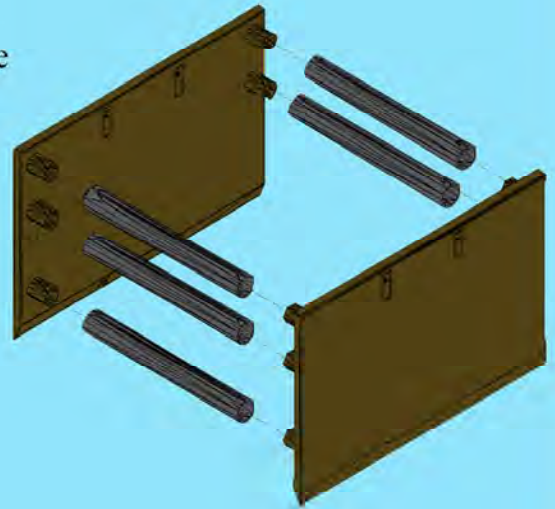
SPREADER SETS FOR STEEL TRENCH SHIELDS

Spreader Sets 8" Sch 80 5-Pipe "I"

Model	Inside Width (In.)	Weight (Lbs.)
SP-24-5	24	515
SP-30-5	30	625
SP-36-5	36	730
SP-42-5	42	840
SP-48-5	48	950
SP-54-5	54	1,060
SP-60-5	60	1,165
SP-66-5	66	1,275
SP-72-5	72	1,380
SP-78-5	78	1,490
SP-84-5	84	1,600
SP-90-5	90	1,710
SP-96-5	96	1,815
SP-102-5	102	1,925
SP-108-5	108	2,035
SP-120-5	120	2,250
SP-132-5	132	2,470
SP-144-5	144	2,685
SP-156-5	156	2,900
SP-168-5	168	3,120
SP-180-5	180	3,335
SP-192-5	192	3,560
SP-204-5	204	3,770
SP-240-5	240	4,420

5-Pipe Independent

Excellent multiple purpose shield. Use the 4-pipe spreaders where pipe clearance is required at both ends of the shield. Add the fifth pipe to increase rigidity for pipe laying work.

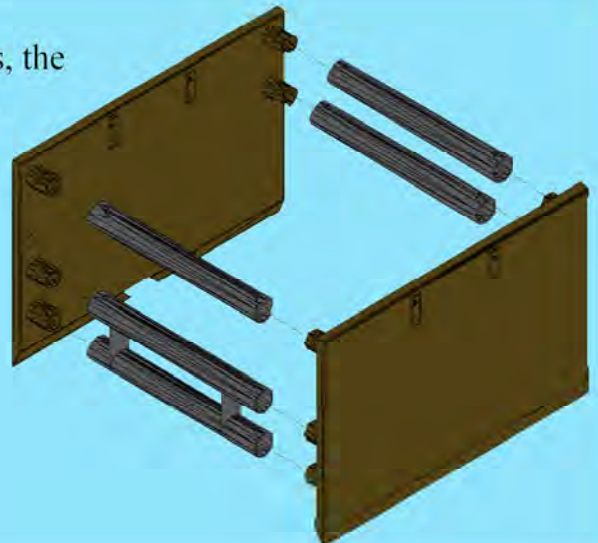


Spreader Sets 8" Sch 80 5-Pipe "C"

Model	Inside Width (In.)	Weight (Lbs.)
SP-24-5C	24	566
SP-30-5C	30	674
SP-36-5C	36	782
SP-42-5C	42	890
SP-48-5C	48	1,000
SP-54-5C	54	1,108
SP-60-5C	60	1,216
SP-66-5C	66	1,324
SP-72-5C	72	1,432
SP-78-5C	78	1,542
SP-84-5C	84	1,650
SP-90-5C	90	1,758
SP-96-5C	96	1,866
SP-102-5C	102	1,976
SP-108-5C	108	2,084
SP-120-5C	120	2,300
SP-132-5C	132	2,518
SP-144-5C	144	2,734
SP-156-5C	156	2,952
SP-168-5C	168	3,168
SP-180-5C	180	3,386
SP-192-5C	192	3,602
SP-204-5C	204	3,820
SP-240-5C	240	4,470

5-Pipe Connected

For larger trench shields, the 5-pipe spreader system provides maximum rigidity while allowing for top operator visibility.



STEEL ROAD PLATES

WITH THE LOCK-N-LIFT ADVANTAGE

INTRODUCING:

TrenchTech, Inc. provides sales and rentals of Steel Road Plates throughout our extensive National distribution network. Our Road Plates are designed with a Single Flush Mounted Picking Plate to allow for easy, balanced handling with no protrusion above the plate surface.

ADVANTAGES:

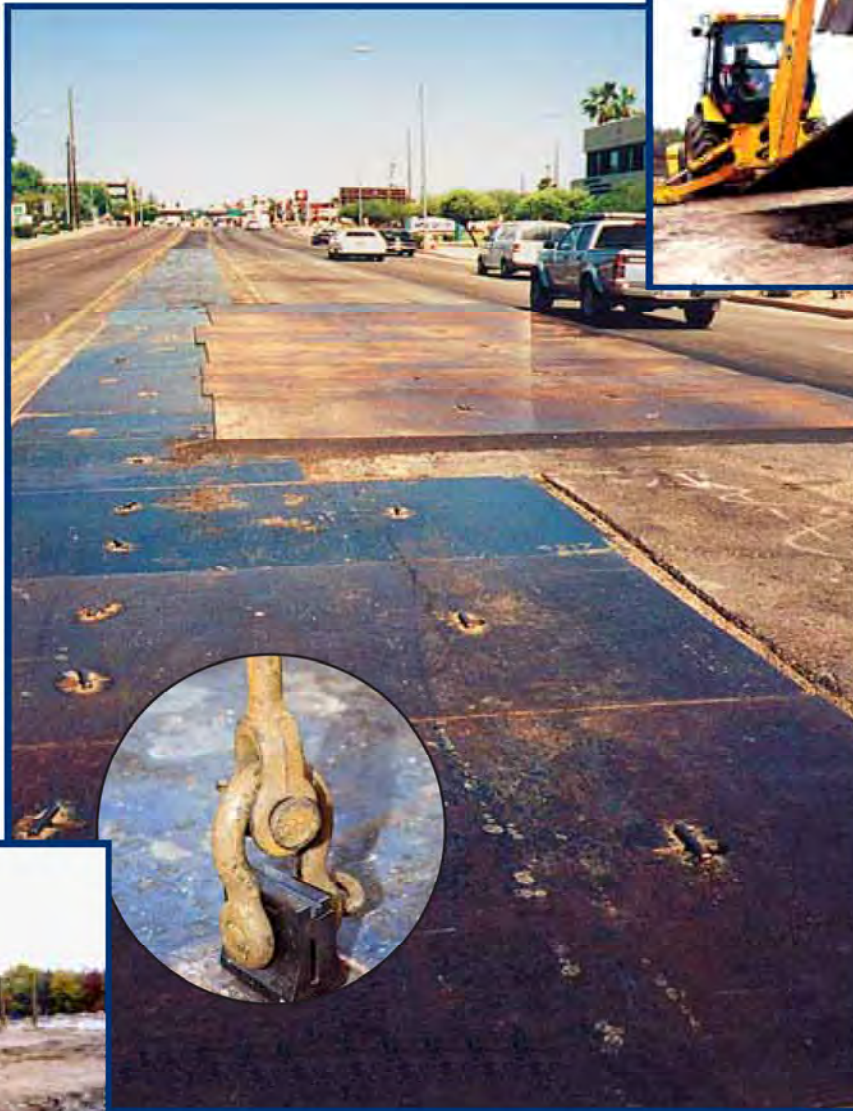
- Superior Strength A-36 Steel
- Flush Mounted Picking Plate
- Center Balanced 1 pt. Lifting
- Quick Connect Tool
- Pedestrian Safe

STANDARD SIZES:

- 5x12 ft. (2460 lbs.)
- 8x12 ft. (3940 lbs.)
- 8x20 ft. (6560 lbs.)



LIFTING DEVICE AND LOCK



VISIT WWW.SHORINGSOLUTIONS.COM

STONE MIZER

BEDDING MATERIAL CONTAINERS

USES:

The Stone Mizer® Series offers wider and more durable bedding material containers than any competitor, and can accommodate oversized excavator buckets while withstanding the forces of larger excavators. Stone Mizers® are available in capacities ranging from 5 to 20 cu. yd. in four different series types: Standard, Heavy Duty, Extended Width Heavy Duty, and Extended Width Severe Duty. Custom built models are also available.

ADVANTAGES:

The Stone Mizer® substantially reduces bedding material loss by keeping it confined to the container. They allow operators to control bedding placement carefully, with a minimum of waste which saves contractors thousands of bottom line dollars each year by:

- Reducing the time that production crews wait for pipe bedding transfers
- Reducing the amount of costly wasted or spilled bedding
- Reduces restoration costs
- Saving more time for pipe production

STANDARD SERIES:

- 1/4 in. plate sides and ends
- 1/2 in. plate bottom
- Lift Bar included
- 24 in. clearance between lift bar and Stone Mizer®

HEAVY DUTY SERIES:

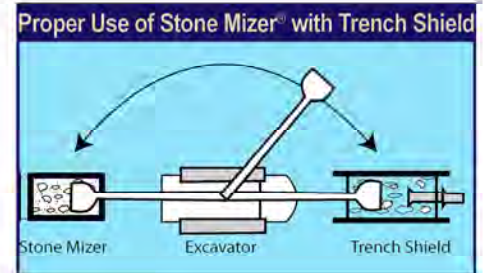
- 3/8 in. plate sides
- 1/2 in. plate ends and bottom
- Lift Bar included
- 24 in. clearance between lift bar and Stone Mizer®
- Recommended for 90,000+ lb. excavators

EXTENDED WIDTH HEAVY DUTY SERIES:

- Heavy duty construction.
- 3/8 in. plate sides.
- 1/2 in. plate ends and bottom.
- Lift Bar included.
- Substantially wider than standard series.
- Better accommodates excavators with oversized buckets.

EXTENDED WIDTH SEVERE DUTY SERIES:

- Engineered to be used with larger excavators of 140,000+ lbs.
- Heavy duty construction.
- 1/2 in. plate sides.
- 3/4 in. plate ends and bottom.
- Lift Bar included.



Sizing & Using a Stone Mizer®

Machine Size (lbs.)	Stone Mizer
Up to 35,000.....	5 cu. yd.
35,000 - 55,000	7.5 cu. yd.
55,000 - 75,000	9 cu. yd.
75,000 - 90,000	10 cu. yd.
90,000 - 120,000	12 cu. yd.
120,000 - 140,000	15 cu. yd.
140,000 - 170,000	20 cu. yd.
170,000 - and up	Custom

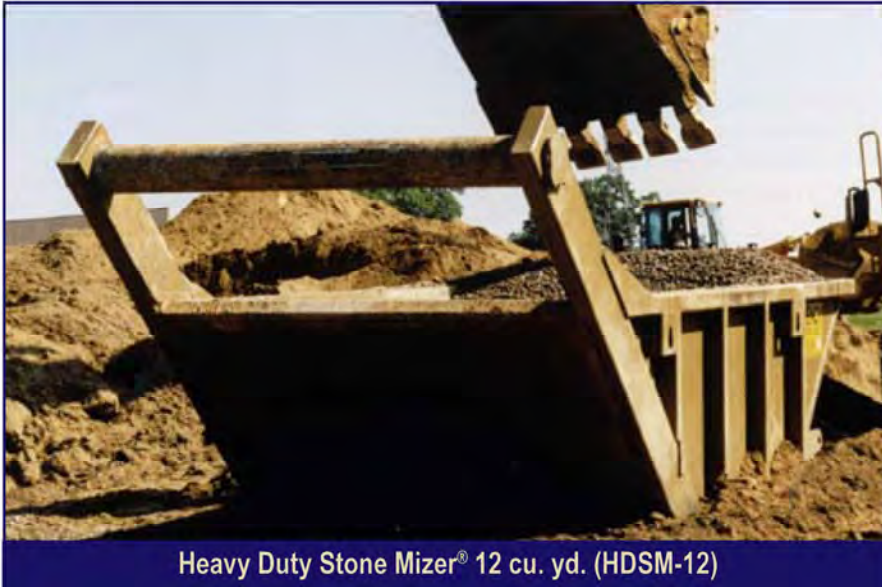
- Mizers should hold a minimum of four buckets (large enough to make one complete cut or cycle).
- The inside dimension of the Mizer should be at least 12 in. wider than the excavator bucket.
- Heavy duty designs are recommended for 90,000+ lbs. excavators.
- Special designs are available.



Stone Mizers® are tapered at both ends to facilitate removal of material with an excavator bucket.

STONE MIZER

BEDDING MATERIAL CONTAINERS



Heavy Duty Stone Mizer® 12 cu. yd. (HDSM-12)



Stone Mizer® 7.5 cu. yd. (SM-7.5)



Stone Mizer® 9 cu. yd. (SM-9)

SM Standard Stone Mizer® with Lift Bar

Model/Capacity (Cu. Yd.)	Size (In.) (Ht. x W x Lg.)	Weight (Lbs.)
SM-5	36 x 60 x 140	4,210
SM-7.5	48 x 60 x 162	4,820
SM-9	48 x 60 x 186	5,490
SM-10	48 x 60 x 204	6,350
SM-12	48 x 70 x 210	7,040
SM-15	60 x 70 x 216	7,530

HDSM Heavy Duty Stone Mizer® with Lift Bar

HDSM-5	36 x 60 x 140	5,210
HDSM-7.5	48 x 60 x 162	6,120
HDSM-9	48 x 60 x 186	6,890
HDSM-10	48 x 60 x 204	7,820
HDSM-12	48 x 70 x 210	8,590
HDSM-15	60 x 70 x 216	9,580
HDSM-18	60 x 70 x 252	10,790
HDSM-20	72 x 70 x 252	11,370

EWHD Extended Width Heavy Duty Stone Mizer® with Lift Bar

SM-EWHD-9	48 x 75 x 157	6,850
SM-EWHD-10	48 x 83 x 158	7,540
SM-EWHD-12	48 x 83 x 181	8,430
SM-EWHD-15	60 x 86 x 188	9,600
SM-EWHD-18	60 x 90½ x 207	10,240
SM-EWHD-20	60 x 90½ x 224	11,070

EWSD Extended Width Severe Duty Stone Mizer® with Lift Bar

SM-EWSD-15	60 x 86 x 188	12,430
SM-EWSD-18	60 x 90½ x 207	13,390
SM-EWSD-20	60 x 90½ x 224	14,600



Lift Bar End Cap



Pulling Lug



Standard Gusset



Heavy Duty Gusset

SNOW-BUCKET

VERSATILE SNOW REMOVAL SYSTEM

ADVANTAGES:

TrenchTech, Inc. introduces a new tool for fast, efficient snow removal and higher equipment utilization. The SnowBucket incorporates an innovative design that greatly increases your snow removal production and reduces your cycle time with a single continuous dumping motion. High sidewall plates allow for a larger volume of snow removed in each pass compared to conventional plow blades.

A heavy-duty rubber cutting edge minimizes road surface damage while maintaining excellent surface contact. Angled steel wear shoes accommodate surface obstructions which could damage your machine. Reinforced structural steel construction guarantees durability. The SnowBucket is designed to quickly connect to a wide variety of machines from small backhoe loaders and skid-steers to large front-end loaders. Optional folding side plates with heavy-duty hinges allow for easier travel and convenient storage. The SnowBucket is available in sizes ranging from 6-20 ft. in width.

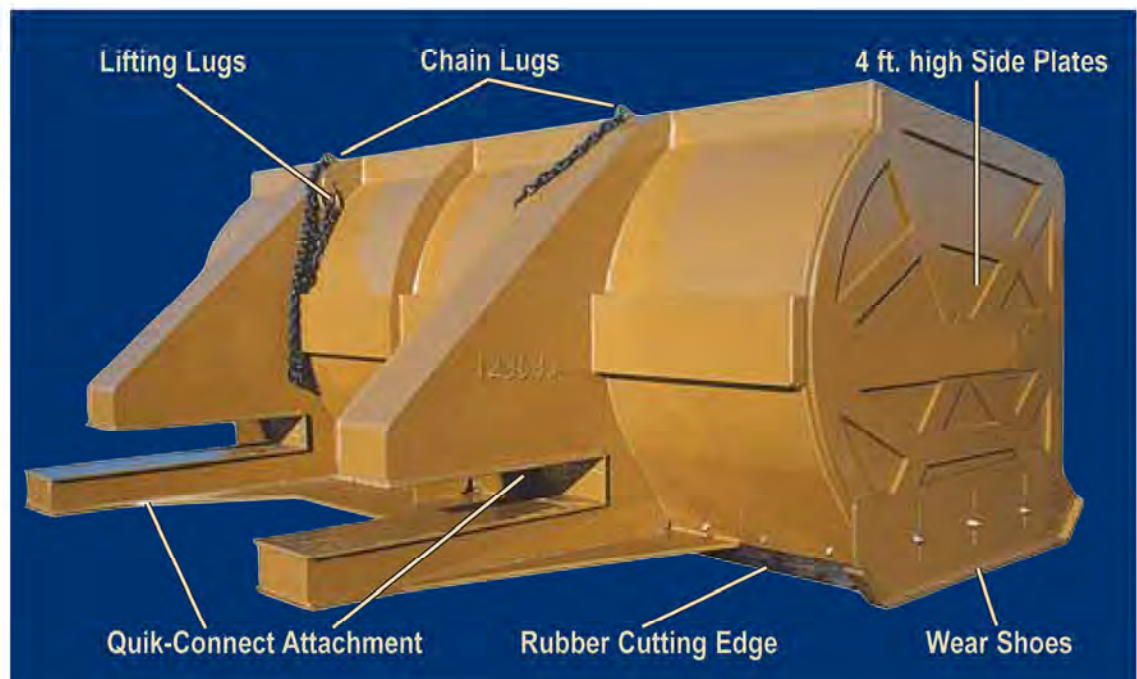


FEATURES:

- High sidewall plates.
- Rubber cutting edge.
- Wear shoes.
- Quik-Connect attachment.
- Sizes ranging from 6-20 ft.

OPTIONS:

- Optional folding side plates.
- Hydraulic kit.



GAS CLIP MONITORS & PUMP DOCK

GAS CLIP MONITORS

- 2 month battery life on a single charge
- Compact and lightweight
- 6 month calibration cycle
- Low maintenance cost
- Simple to use
- 100% quality control testing
- LEL sensor (IR) does not require oxygen

Gas Clip Technologies Multi Gas Clip with Infrared Sensor



GAS CLIP PUMP DOCK

- Test 4 detectors at a time, up to 12 per minute
- Reduce testing time and gas usage with our portable or wall mountable MGC Pump Dock
- Accurately test, record and store information critical to maintain safety
- Individual monitor event logs, firmware, unit configurations and bump/calibration logs
- Robust 4+ GB USB gives you all the memory you need and the lithium ion battery ensures thousands of tests before needing to be recharged

Our MGC Pump Docks let you bump test and calibrate 4 detectors at once for LEL, H2S, CO and O2. With one dock, you can bump test up to 12 detectors in a minute, which saves valuable time and reduces the use of testing gas. The MGC Pump Dock, or MGC Pump Wall Mount Dock, is compatible with all MGC Pump detectors (Infrared or Pellistor).

These reliable portable multi gas detectors and docks are proven to help facility workers and contractors do their jobs safely, productively and cost effectively. Every second counts.

Gas Clip Technologies Pump Dock

